

Santee Cooper Surplus Sales

The following properties have been declared surplus to the needs of Santee Cooper and are available for purchase.

Disclaimer: All information deemed reliable but not guaranteed.
All *properties* are subject to prior sale, change or withdrawal.

Surplus Sales

Large Tracts > 50 acres





Orangeburg County
Port. of 0373-00-00-003.00
Approx. 90 ac.

Source: Esri, DigitalGlobe, GeoEye, Earthstar Geographics, CNES/Airbus DS, USDA, USGS, AeroGRID, IGN, and the MIT Near Earth Community

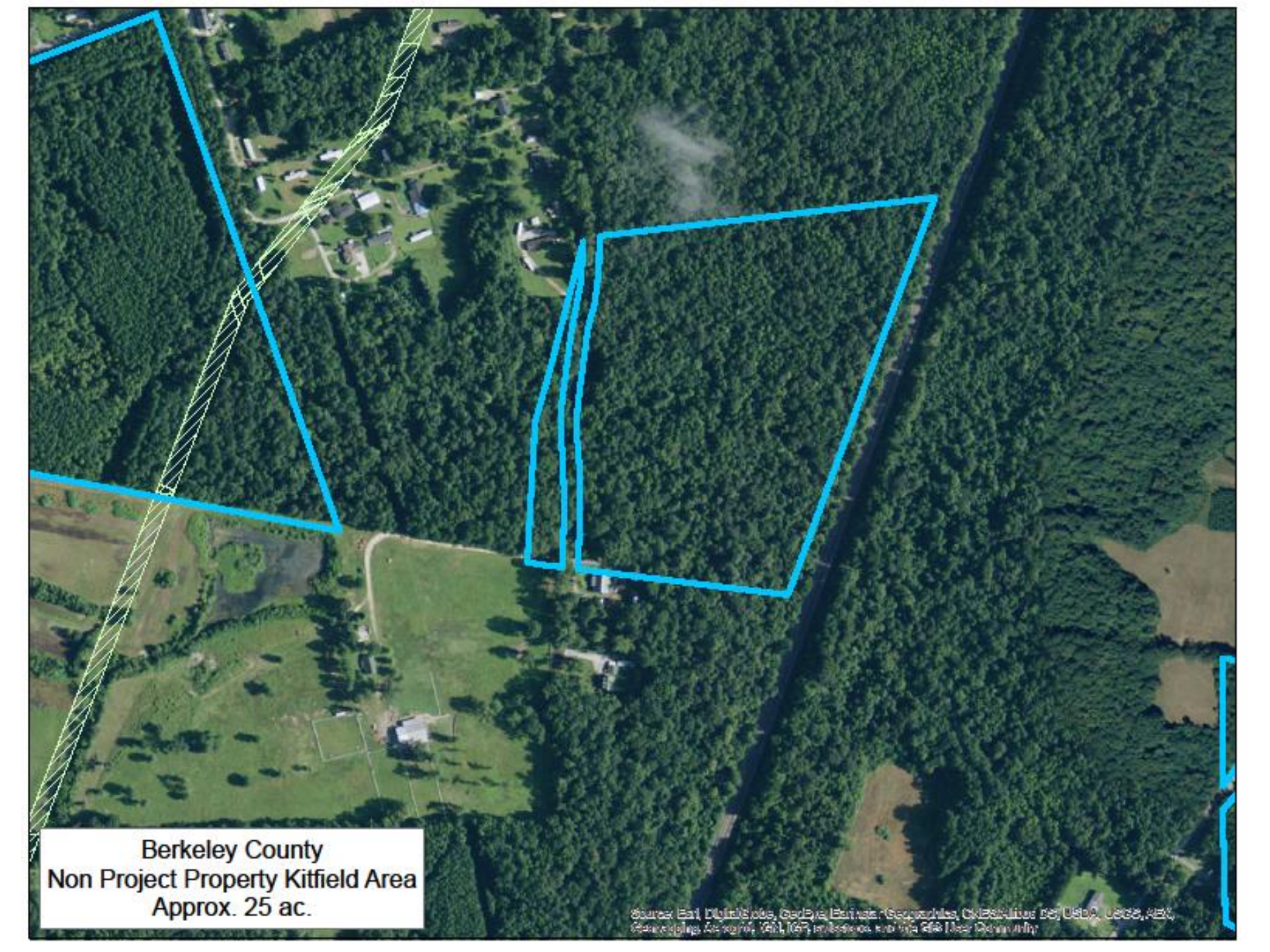
Surplus Sales

Large Tracts > 10 acres




**Berkeley County
Non Project Property Kitfield Area
Approx. 38 ac.**

Source: Esri, DigitalGlobe, GeoEye, Earthstar Geographics, CNES/Airbus DS, USDA, USGS, Aero
Sensing, AeroGRID, IGN, IGP, and the GIS User Community



Berkeley County
Non Project Property Kitfield Area
Approx. 25 ac.

Source: Esri, DigitalGlobe, GeoEye, Earthstar (Geomatics), CNES/Airbus DS, USDA, USGS, Aero
Graphic, GeoEye, IGN, CNES, Airbus, and CNES User Community

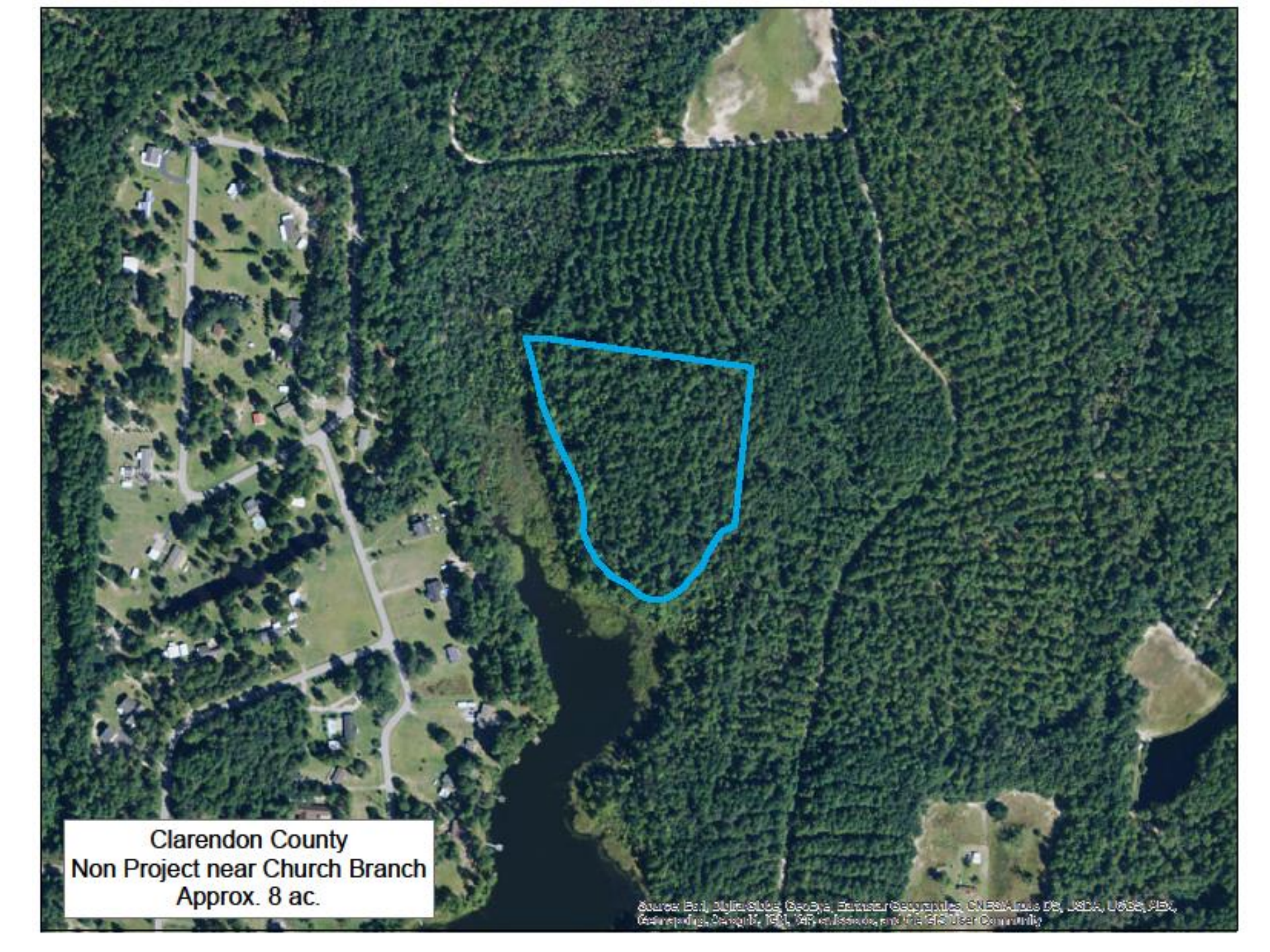


**Berkeley County
Non Project Property Kitfield Area
Approx. 14 ac.**

Source: Esri, DigitalGlobe, GeoEye, Earthstar Geographics, CNES/Airbus DS, USDA, USGS, Aero
Photography, AeroGRID, IGN, IGP, and the GIS User Community

Surplus Sales

Small Tracts < 10 acres



Clarendon County
Non Project near Church Branch
Approx. 8 ac.

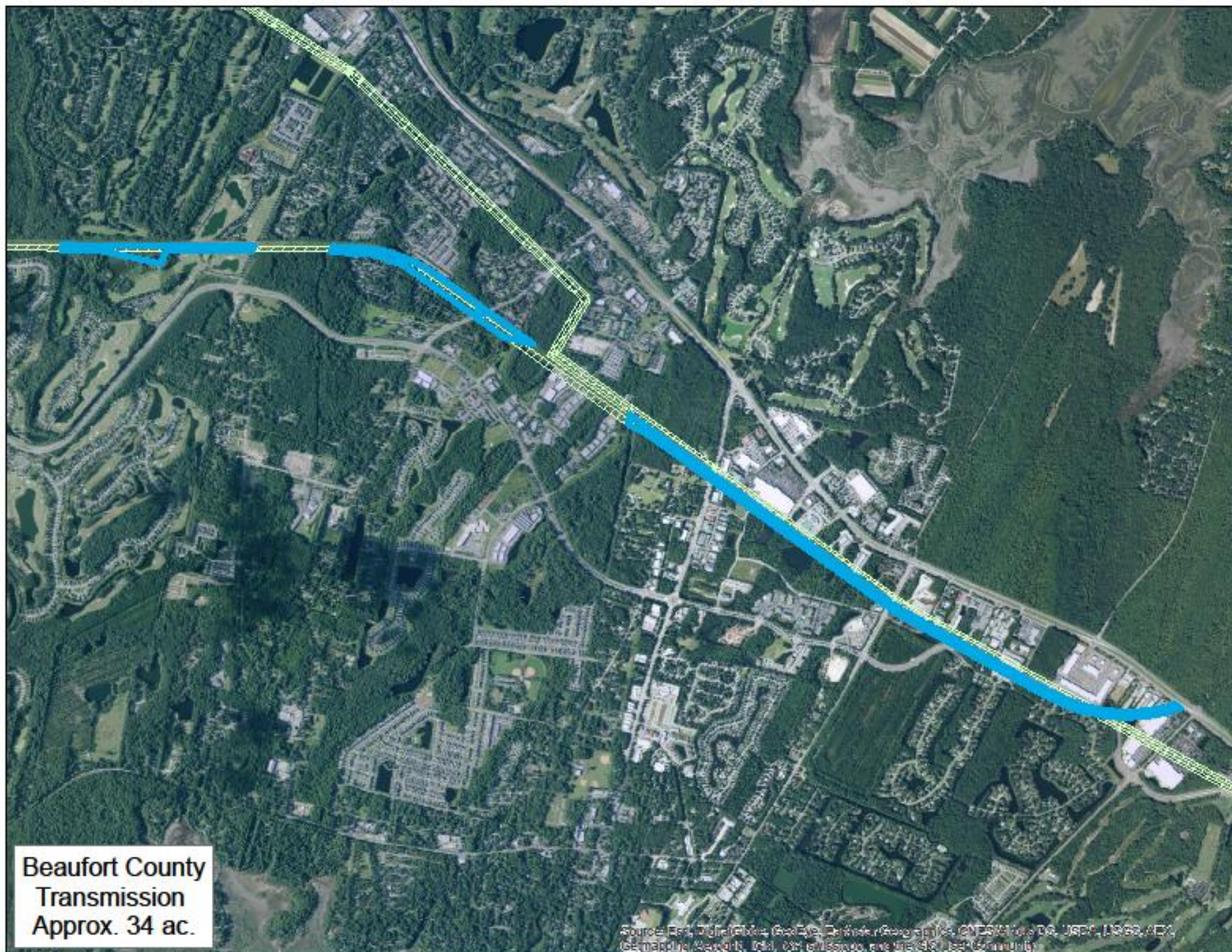
Source: Esri, DigitalGlobe, GeoEye, EarthstarGeographics, CNES/Airbus DS, USDA, USGS, Aero
Grain, GeoEye, IGN, Aeri, GeoEye, and the GIS User Community



Surplus Sales

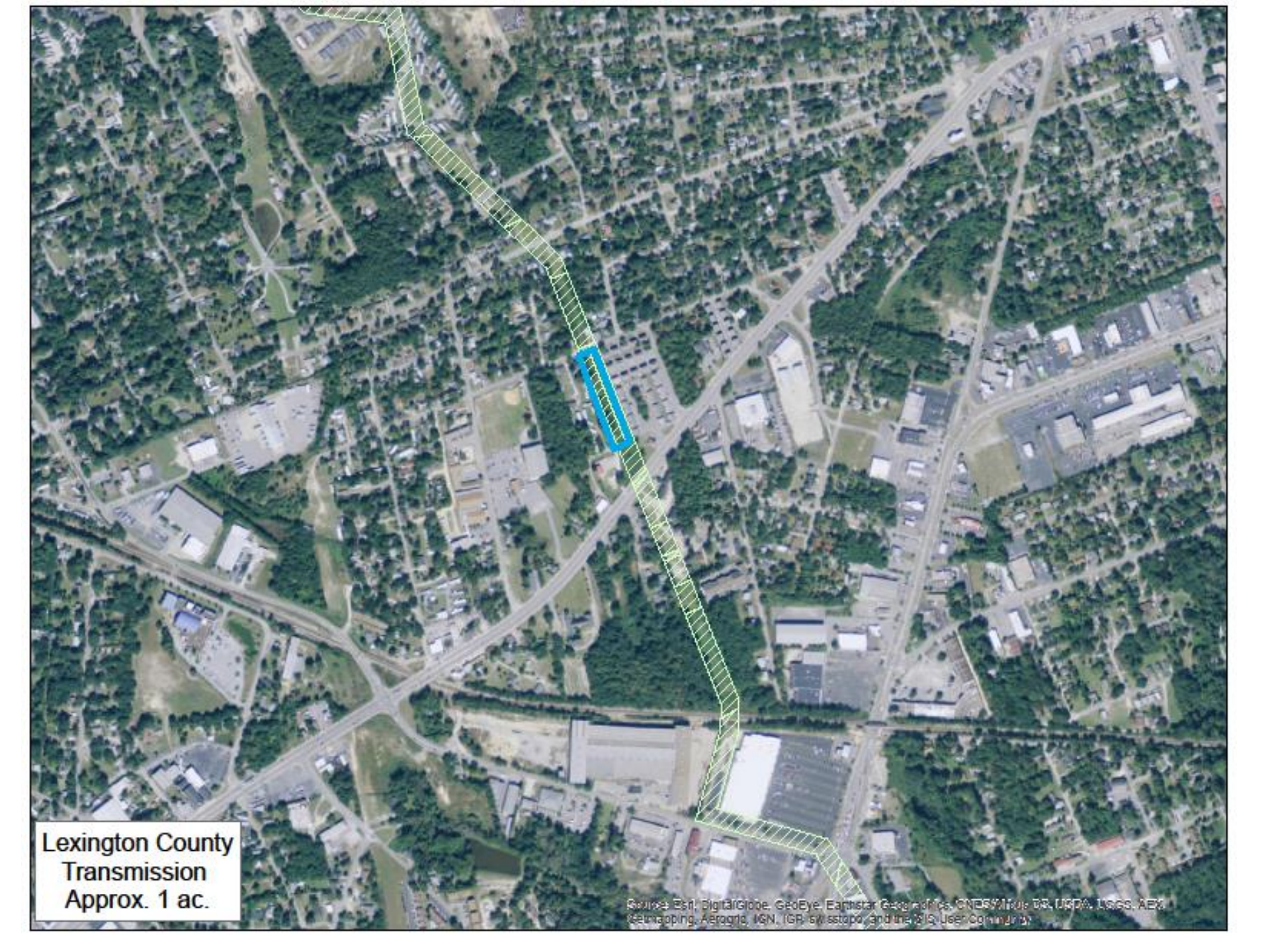
Examples of Transmission Line Parcels

These 84 properties are not being actively marketed due to issues with access, etc. . .



Beaufort County
Transmission
Approx. 34 ac.

Source: Esri, DigitalGlobe, GeoEye, Earthstar Geographics, CNES/Airbus DS, USDA, AeroGRID, IGN, GEBCO, Swire, CNR, GEBCO, and the U.S. Coast Community



Lexington County
Transmission
Approx. 1 ac.

Source: Esri, DigitalGlobe, GeoEye, Earthstar Geographics, CNES/Airbus DS, USDA, USGS, Aero
Geo, Bing, AeroGRID, IGN, IGR, swisstopo, and the GIS User Community