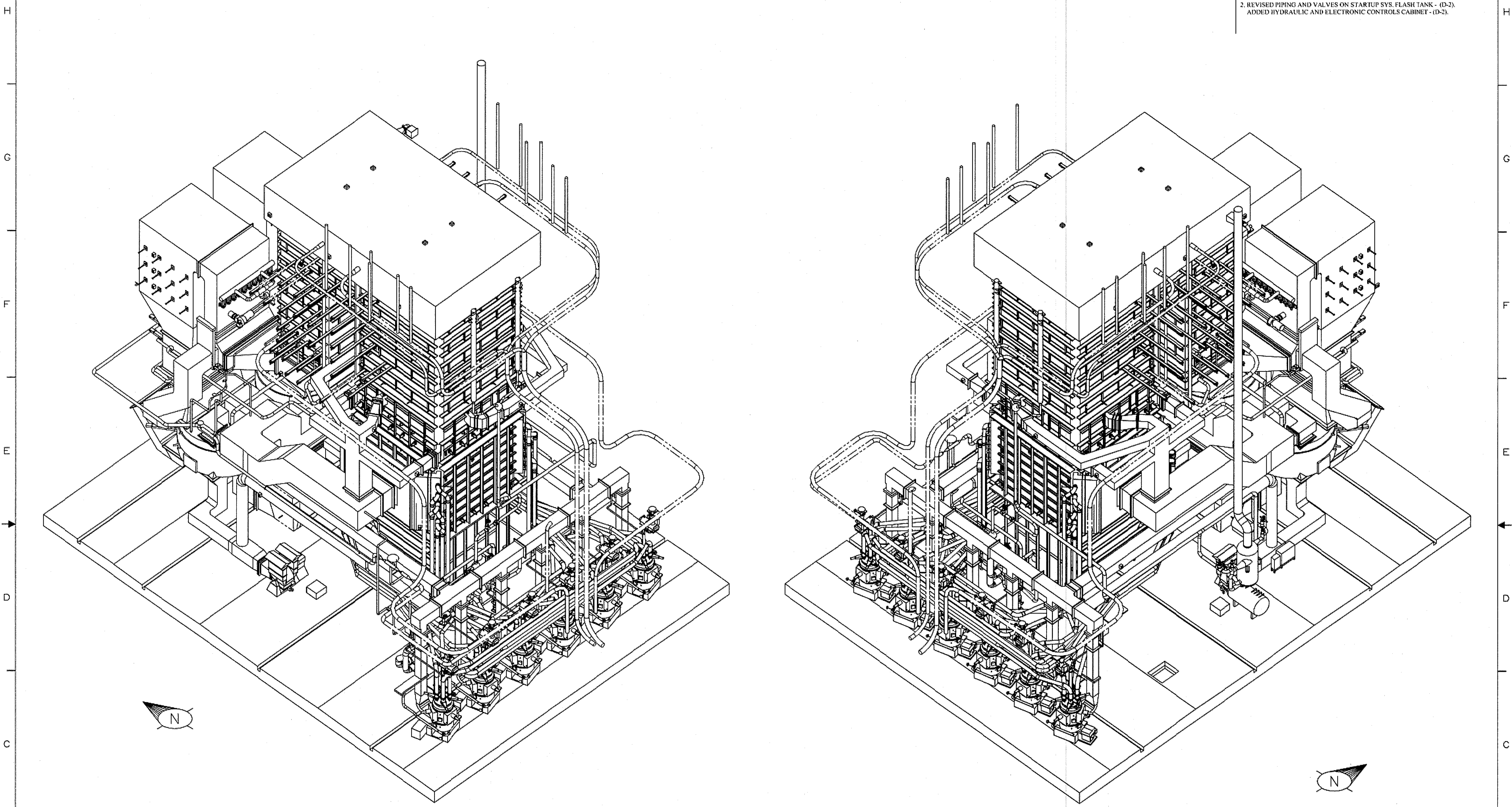


1. UPDATED PER LATEST DESIGN INFORMATION.
 2. REVISED PIPING AND VALVES ON STARTUP SYS. FLASH TANK - (D-2).
 ADDED HYDRAULIC AND ELECTRONIC CONTROLS CABINET - (D-2).



ISO VIEWS

WORLEYPARSONS RESOURCES & ENERGY
 PEE DEE UNIT #1 PROJECT
 ✓ REVIEWED AND ACCEPTED
 — REVIEWED AND ACCEPTED AS NOTED
 (REVISIT FOR RECORD)
 — NOT ACCEPTED (REVISIT FOR REVIEW)
 — FOR INFORMATION ONLY (REVIEW NEEDED)

THE REVIEW OF THIS SUBMITTAL IS ONLY FOR GENERAL
 COORDINATION WITH THE DESIGN CONCEPTS OF THE
 PROJECT AND DOES NOT CONSTITUTE AN ENDORSEMENT OF THE
 INFORMATION IN THE CONTRACT. THE SUBMITTAL VENDOR
 IS FULLY RESPONSIBLE FOR THE ACCURACY OF THE
 INFORMATION AND FOR THE COMPLIANCE WITH
 THE PROJECT REQUIREMENTS. FOR CHANGES TO THE
 DESIGN OR FOR ADDITIONAL INFORMATION, CONTACT THE
 DESIGN ENGINEER OR THE PROJECT MANAGER.
 FOR INFORMATION ON THE PROJECT, VISIT THE
 PROJECT WEBSITE: www.alstom.com
 FOR TECHNICAL SUPPORT, CONTACT THE
 PROJECT MANAGER OR THE DESIGN ENGINEER.
 THIS DOCUMENT IS THE PROPERTY OF ALSTOM POWER INC.
 AND IS NOT TO BE REPRODUCED OR DISCLOSED
 WITHOUT PERMISSION OF ALSTOM POWER INC.
 DATE: 2/1/09

NOTE:
 1. FOR GENERAL NOTES, REFERENCE DRAWINGS, LEGEND, ETC.
 SEE DWG. NO. 00506-1E0001.

REV	DESCRIPTION	DATE	DRAWN BY	CHECKED BY	APPROVED BY
02	REVISED AS SHOWN & NOTED	16 APR 09	R.G.M.	R.A.V.	R.B.
01	ISSUED FOR APPROVAL	20 DEC 06	J.K.B.	S.I.M.	R.B.
00	ISSUED FOR COORDINATION	29 SEP 06	J.K.B.	S.I.M.	R.B.

CONTRACT NO. 00506 / WORLEYPARSONS CONT. NO. 161101 UNIT NO. 1
 GEN. ARR'G'T. - ISO VIEWS

SANTEE COOPER
 PEE DEE UNIT #1

THIS DRAWING IS THE PROPERTY OF
 ALSTOM Power Inc.
 WINDSOR, CONNECTICUT 06095

SCALE: NONE
 DRAWN BY: J.K.B. DATE: 2006-08-28
 CHECKED BY: S.I.M. DATE: 29 SEP 06
 APPROVED BY: R.B.

WPS CODE: 68 88 B103

ALSTOM
 THIS DOCUMENT CONTAINS
 PROPRIETARY DATA AND MAY NOT
 BE REPRODUCED OR DISCLOSED
 WITHOUT PERMISSION OF
 ALSTOM Power Inc.

DRAWING NO. 00506-1E0000
 REV. 02