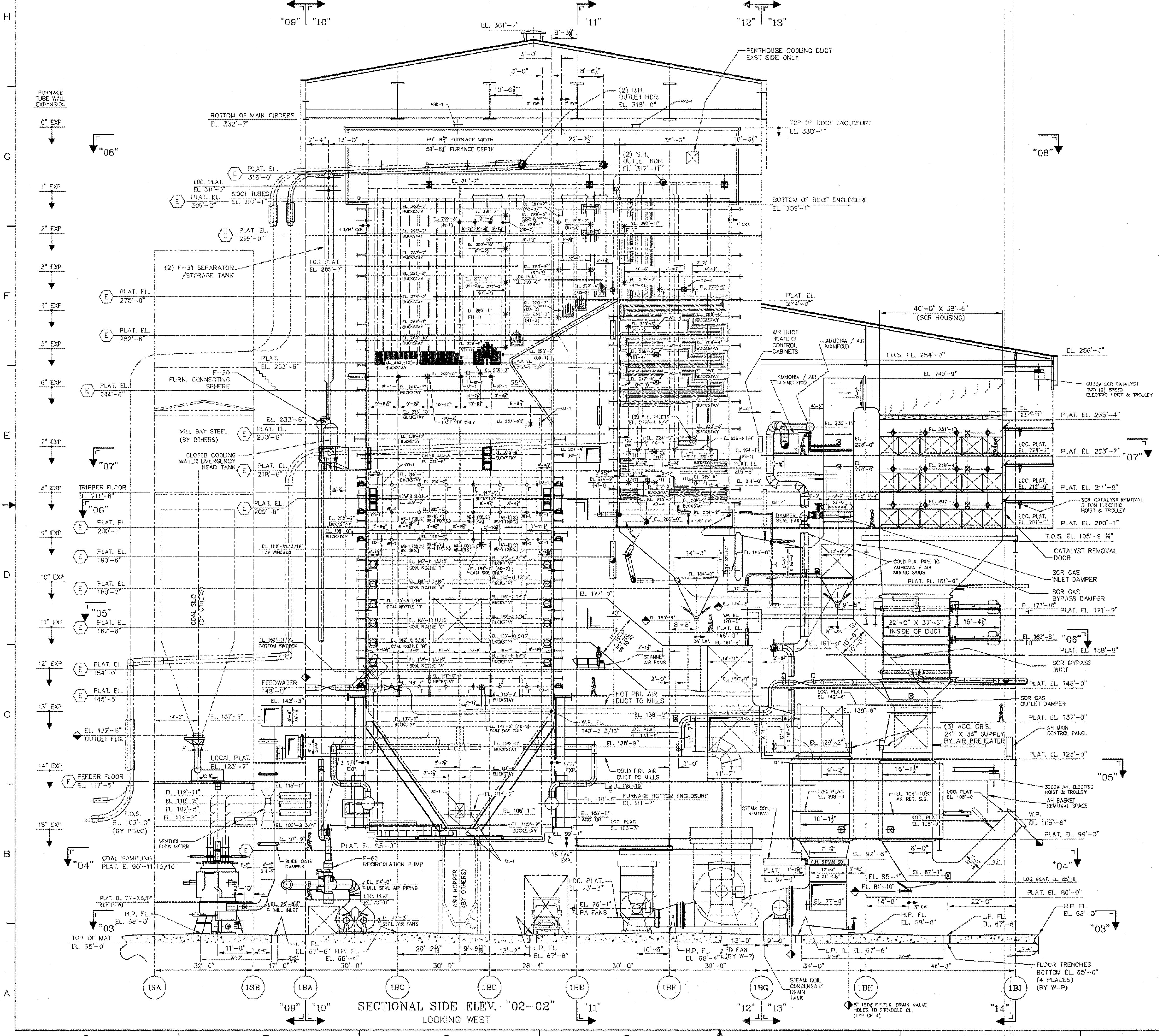


1. REROUTED STARTUP SYS. LINE F-61B1 - BOILER RECIRCULATION TO ECONOMIZER - (B-C-7).
2. ADDED P.A. & F.D. AIR DUCT DRAIN VALVES - (4A).
3. ADDED AMMONIA DILUTION AIR HEATERS CONTROL CABINETS - (D-5).



PEDE-1-DV-161101-00506-1E0002-R6.PDF

NOTE:
 1. FOR GENERAL NOTES, REFERENCE DRAWINGS, LEGEND, ETC. SEE DWG. No. 00506-1E0001.

REV	DESCRIPTION	DATE	DRAWN BY	CHECKED BY	APPROVED BY
06	REVISED AS SHOWN & NOTED	16 APR 06	R.G.M.	R.A.Y.	R.B.
05	REVISED AS SHOWN & NOTED	22 JAN 06	Z.E.W.	S.A.	R.B.
04	REVISED AS SHOWN & NOTED	07 FEB 06	R.G.M.	S.A.	R.B.
03	REVISED AS SHOWN & NOTED	03 OCT 07	Z.E.W.	REP	RR
02	ISSUED FOR APPROVAL	08 JUN 07	Z.E.W.	RAV	RR
01	ISSUED FOR APPROVAL	20 OCT 06	J.K.B.	S.I.K.	RR
00	ISSUED FOR COORDINATION	29 SEP 06	J.K.B.	S.I.K.	RR

CONTRACT NO. 00505 / WORLEYPARSONS CONT. NO. 161101 UNIT NO. 1

GEN. ARR'G'T. - SECT. SIDE ELEV. '02-02'

SANTEE COOPER
 PEE DEE UNIT #1

THIS DRAWING IS THE PROPERTY OF
 ALSTOM Power Inc.
 WINDSOR, CONNECTICUT 06095

SCALE: 3/8" = 1'-0"
 DRAWN BY: J.K.B. DATE: 2006-08-28
 CHECKED BY: S.I.M. DATE: 20 SEP 06
 APPROVED BY: R.B. DATE: 12 SEP 06

WBS CODE: 68 88 8103

ALSTOM	THIS DOCUMENT CONTAINS PROPRIETARY DATA AND MAY NOT BE REPRODUCED OR DISCLOSED WITHOUT PERMISSION OF ALSTOM Power Inc.	DRAWING NO. 00506-1E0002	REV. 06
---------------	--	-----------------------------	------------