

2025

Commercial Prescriptive Program Manual



Table of Contents

Introduction	2
1.1 Program Overview	2
1.2 Contact Information	2
Eligibility Requirements and Rebate Information	3
2.1 Customer Eligibility	3
2.2 Measure Eligibility	3
2.3 Rebate Information.....	7
Participation Process	8
3.1 Program Timeline.....	8
3.2 Customer Participation Process.....	8
3.2.2 New Construction Lighting Measures.....	11
3.2.3 HVAC and Other Measures	12
3.2.4 Submittals.....	13
3.2.5 Site Inspections	13
3.3 Trade Ally Participation Process.....	14
Equipment Catalogs	15
Lighting Equipment Catalog.....	16
HVAC Equipment Catalog	21
Commercial Refrigeration and Kitchen Equipment Catalog	30
Domestic Hot Water Equipment Catalog	35
Pumps/Motors Equipment Catalog.....	37
Smart Thermostat Equipment Catalog	41
Appendix A Frequently Asked Questions.....	42
Appendix B Customer Forms	43
2025 Commercial Rebate Programs Terms and Conditions	44
Commercial Smart Thermostat Installation Form	50
Appendix C Sample Santee Cooper Electric Bill	52
Appendix D Glossary	53
Appendix E Energy Code HVAC Minimum Efficiencies.....	56

1.1 Program Overview

Santee Cooper is pleased to offer its 2025 Commercial Prescriptive Rebate Program (“Rebate Program” or “Program”). This manual outlines the requirements of the 2025 Rebate Program. The Program promotes the implementation of high-efficiency energy conservation measures. Rebates promoted through this Program aim to reduce Santee Cooper customers’ incremental cost to upgrade to high-efficiency equipment over standard-efficiency options and to install other energy efficient products. The following is a list of measures to be included in this Rebate Program:

- Lighting and lighting controls
- HVAC equipment
- Building envelope and other facility improvements
- Commercial refrigeration equipment efficiency upgrades and ENERGY STAR® qualified commercial appliances

Rebates for qualifying measures are available for new construction, major renovation, and retrofit applications, unless noted otherwise.

1.2 Contact Information

Questions and requests for additional information should be directed to:

- **Website:** www.empowerSCbusiness.com
- **Trade Ally Portal:** www.empowerSC4business.com
- **Email:** commercial.energy@santeecooper.com
- **Phone:** (843)347-3399 ext. 3910 (Horry and Georgetown Counties)
and (843)761-8000 ext. 3910 (Berkeley County)
- **Mail:** Santee Cooper Energy Support Services
305-A Gardner Lacy Road
Myrtle Beach, SC 29579

2.1 Customer Eligibility

To be eligible to participate in the Rebate Program, a customer must be served by Santee Cooper under one or more of the Santee Cooper commercial electric rate schedules listed in Table 2-1 below.

Table 2-1: Eligible Rate¹ Schedule for the Rebate Program

Description	Schedules
General Service	GA
Medium General Service	GB
Seasonal General Service	GV
General Service – Time of Use Rate	GT
Large General Service	GL
Temporary Service	TP

2.2 Measure Eligibility

The Rebate Program provides rebates for many types of energy-efficient technologies, as shown in Table 2-2 below.

Table 2-2: Rebate Program Eligible Measures and Equipment Summary²

Lighting LED Lighting Occupancy & Daylight Sensors Dimming Sensors LED Underwater Lighting Retrofit HVAC Single Phase Heat Pumps 3- Phase HP/AC PTAC/PTHP VRF/Mini-split systems HVAC Controls Hotel Management	Refrigeration LED Display Case Lighting Electronically Commutated Motors Refrigerant Suction Line Insulation ENERGY STAR® Refrigerators ENERGY STAR® Freezers Kitchen ENERGY STAR® Kitchen Appliances Demand Control Kitchen Hood Domestic Hot Water Residential Style Water Heaters Drain Water Heat Recovery	Domestic Hot Water Cont. Aerators and Pipe Insulation Pumps and Motors Variable Speed Pool Pumps Variable Speed Drives set to Constant Speed Domestic Type Water Pumps Thermostats Smart Thermostats
--	--	--

¹ Santee Cooper approved rates

² Commercial service only

To be eligible for a rebate, all measures must meet the following requirements:

- Equipment and materials must be purchased, and all work initiated between December 1, 2024, and November 30, 2025.
- Equipment must be installed, and Customer Rebate Applications submitted by November 30, 2025, to be eligible for Program rebates.
- Qualifying equipment and materials must be new.
- Qualifying measures cannot have been previously rebated through any other Santee Cooper rebate program within the ineligibility period, with the exception of the T8 and T5 conversion to LEDs.
- Qualifying measures must be completed in a manner that meets or exceeds all applicable code and regulatory requirements.
- The equipment that is removed and replaced cannot be re-installed elsewhere and must be disposed of in accordance with all applicable local, state, and federal codes and regulations.

Detailed information on specific eligibility for qualifying energy-efficiency measures and equipment is included in the Equipment Catalogs starting on page 13. Instructions on how to complete the Customer Rebate Application and the additional documentation required for each measure are also included.

Measures		Submit "as planned" Workbook	Schedule Pre-inspection before beginning work	Submit "as installed" Workbook/Application	Additional Information Needed	Submit Dated Sales Receipt or Paid Invoice	Specs Sheet(s)	Signed Terms & Conditions and W9 with Tax ID Number
Retrofit Lighting								
	LED Lighting	Lighting Workbook	Yes	Lighting Workbook		Yes	Yes	Yes
	Occupancy & Daylight Sensors	Lighting Workbook	Yes	Lighting Workbook		Yes	Yes	Yes
	Dimming Sensors	Lighting Workbook	Yes	Lighting Workbook		Yes	Yes	Yes
	LED Underwater Lighting Retrofit	Lighting Workbook	Yes	Lighting Workbook		Yes	Yes	Yes
New Construction Lighting								
	LED Lighting	No	No	New Construction Lighting Workbook		Yes	Yes	Yes
	Occupancy & Daylight Sensors	No	No	New Construction Lighting Workbook		Yes	Yes	Yes
	Dimming Sensors	No	No	New Construction Lighting Workbook		Yes	Yes	Yes
	LED Underwater Lighting Retrofit	No	No	New Construction Lighting Workbook		Yes	Yes	Yes
HVAC								
	Single Phase Heat Pumps	No	No	Rebate Application	ASTM B117.85	Yes	Yes	Yes
	3- Phase HP/AC	No	No	Rebate Application & HVAC Calculator	ASTM B117.85	Yes	Yes	Yes
	PTAC/PTHP	No	No	Rebate Application & HVAC Calculator	ASTM B117.85	Yes	Yes	Yes
	Variable Frequency Drives	No	No	Rebate Application		Yes	Yes	Yes
	VRF/Mini-split systems	No	No	Rebate Application & HVAC Calculator	ASTM B117.85	Yes	Yes	Yes
	HVAC Controls	No	No	Rebate Application		Yes	Yes	Yes
	Hotel Management	No	No	Rebate Application		Yes	Yes	Yes

Measures		Submit "as planned" Workbook	Schedule Pre-inspection before beginning work	Submit "as installed" Workbook/Application	Additional Information Needed	Submit Dated Sales Receipt or Paid Invoice	Specs Sheet(s)	Signed Terms & Conditions and W9 with Tax ID Number
Refrigeration								
	LED Display Case Lighting	No	No	Rebate Application		Yes	Yes	Yes
	Electronically Commutated Motors	No	No	Rebate Application		Yes	Yes	Yes
	Refrigerant Suction Line Insulation	No	No	Rebate Application		Yes	Yes	Yes
	ENERGY STAR® Refrigerators	No	No	Rebate Application		Yes	Yes	Yes
	ENERGY STAR® Freezers	No	No	Rebate Application		Yes	Yes	Yes
Kitchen								
	ENERGY STAR® Kitchen Appliances	No	No	Rebate Application		Yes	Yes	Yes
	Demand Control Kitchen Hood	No	No	Rebate Application		Yes	Yes	Yes
Domestic Hot Water								
	Residential Style Water Heaters	No	No	Rebate Application		Yes	Yes	Yes
	Drain Water Heat Recovery	No	No	Rebate Application		Yes	Yes	Yes
	Aerators and Pipe Insulation	No	No	Rebate Application		Yes	Yes	Yes
Pumps and Motors								
	Variable Speed Water Feature Pumps	No	No	Rebate Application		Yes	No	Yes
	Variable Speed Drives set to Constant Speed	No	No	Rebate Application		Yes	No	Yes
	Domestic Type Water Pumps	No	No	Rebate Application		Yes	Yes	Yes
Thermostats								
	Smart Thermostats	No	No	Rebate Application	Picture(s) of Installed Thermostat(s)	Yes	No	Yes

2.3 Rebate Information

Customers will be issued rebates upon the verified completion of all the requirements for the associated measures and will receive rebate amounts in accordance with the payment structure detailed in the Equipment Catalogs starting on page 13, not to exceed 50% of the eligible project cost. (With the exception of the smart thermostat rebate, which is \$50 per thermostat, not to exceed the cost of the thermostat.) Eligible project costs are based upon the actual costs incurred by the customer in connection with the evaluation, construction, installation, implementation, and commissioning of an eligible energy-efficiency measure. Material and external labor costs must be thoroughly documented by the customer. Examples of acceptable documentation of eligible costs include invoices, work orders, cancelled checks, and accounting system reports.

Each facility is capped at a maximum rebate of \$200,000 for the Rebate Program, and \$300,000 for all energy-efficiency programs offered by Santee Cooper through November 30 of each year. A 1099 tax form will be sent if total rebate exceeds \$600.

Rebate requests (Customer Rebate Applications and/or Lighting Workbook/HVAC Calculator) will be reviewed in the order they are received. Customers requesting rebates after all available Rebate Program funding has been reserved will be placed on a waiting list in the order the requests are received by Santee Cooper.

3.1 Program Timeline

This Rebate Program is available for qualifying measures initiated between December 1, 2024, and November 30, 2025. All qualifying equipment must be purchased and installed, qualifying work completed³ and associated Customer Rebate Applications (including Lighting Workbook/HVAC Calculator, if applicable) received by Santee Cooper on or before November 30 of the year the project is started. In no case will the 2025 Customer Rebate Application deadline be later than November 30, 2025.

Santee Cooper will honor Customer Rebate Applications (Customer Rebate Applications and/or Lighting Workbook/HVAC Calculator) on a first-come first-served basis, based on the date received. All complete and qualifying Customer Rebate Applications received on or prior to the yearly application deadlines will be honored subject to available funding.

3.2 Customer Participation Process

There are three general participation procedures for the Rebate Program: one for retrofit lighting measures, one for new construction lighting measures, and one for all non-lighting measures. Table 3-1 provides a summary of these three participation processes. Detailed information about each participation process is provided in this section, and participation information, including instructions on completing the Customer Rebate Application for each eligible measure, is included in the Equipment Catalogs starting on page 12.

Table 3-1: Rebate Program Customer Participation Overview

Participation Steps	Retrofit Lighting	New Construction Lighting	HVAC and all Other Measures
Step 1	Submit “as planned” Retrofit Lighting Workbook	Purchase and install eligible lighting equipment	Purchase and install eligible measure(s)
Step 2	Call Santee Cooper and schedule a pre-inspection with an Energy Advisor.	Submit New Construction Lighting Workbook and Customer Rebate Application Documents. Include the square footage of all indoor lighted areas and a full set of electrical plans which include the lighting schedule.	Submit Customer Rebate Application Documents
Step 3	Purchase and install eligible measure(s) after approval by the Program Administrator		
Step 4	Submit “as installed” Retrofit Lighting Workbook and Customer Rebate Application Documents		

³For new construction projects that extend past program deadline, please contact Santee Cooper prior to November 30, 2025 to discuss project eligibility.

3.2.1 Retrofit Lighting Measures

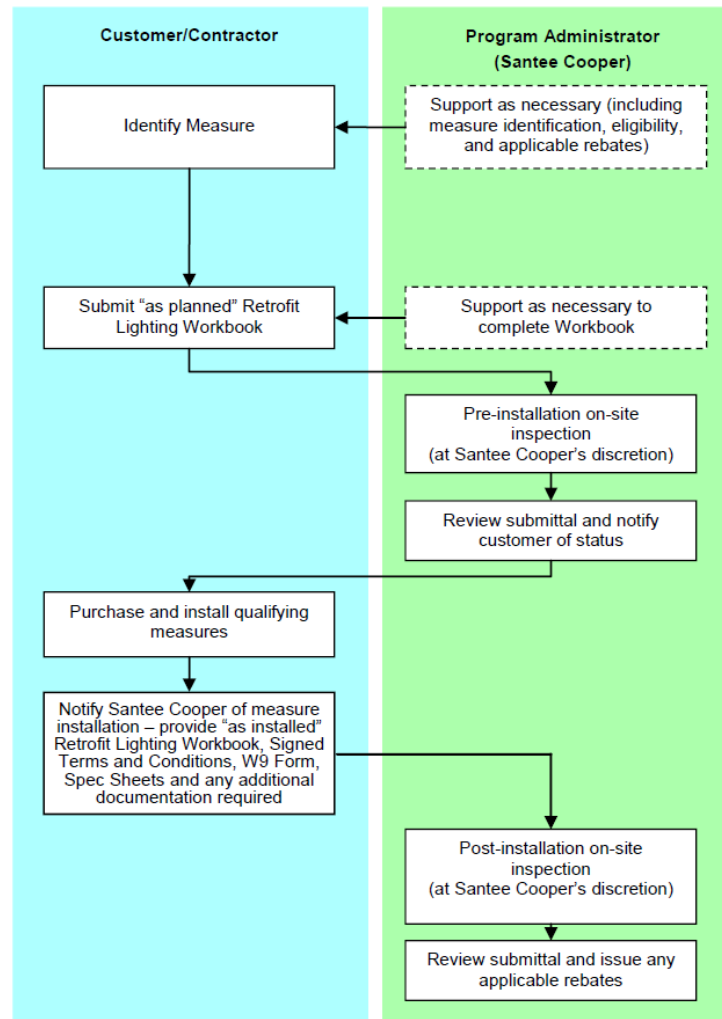
NOTE: To be eligible for retrofit lighting rebate you must first prepare and submit “as-planned” Retrofit Lighting Workbook, then schedule a pre-inspection with a Santee Cooper Energy Advisor. Only after the project has been pre-inspected, the retrofit work can begin. Any projects completed without a pre-inspection will not be eligible for a rebate.

Customers with eligible lighting retrofit measures can participate in the Rebate Program by following these basic steps:

- **Step 1:** Prepare and submit “as-planned” Retrofit Lighting Workbook **prior to purchasing and installing equipment** (Note: customers purchasing, or agreeing to purchase by signing a purchase order or contract, or installing lighting equipment prior to receiving approval of the Retrofit Lighting Workbook from the Program Administrator will not be eligible for participation or rebates)
- **Step 2:** Purchase and install the qualifying measures after approval from the Program Administrator.
- **Step 3:** Submit “as installed” Retrofit Lighting Workbook along with other required documentation including W9 form with valid Tax ID

Figure 3-1 shows a graphical representation of the participation process for retrofit lighting measures.

Figure 3-1 Participation Process for Retrofit Lighting Measures



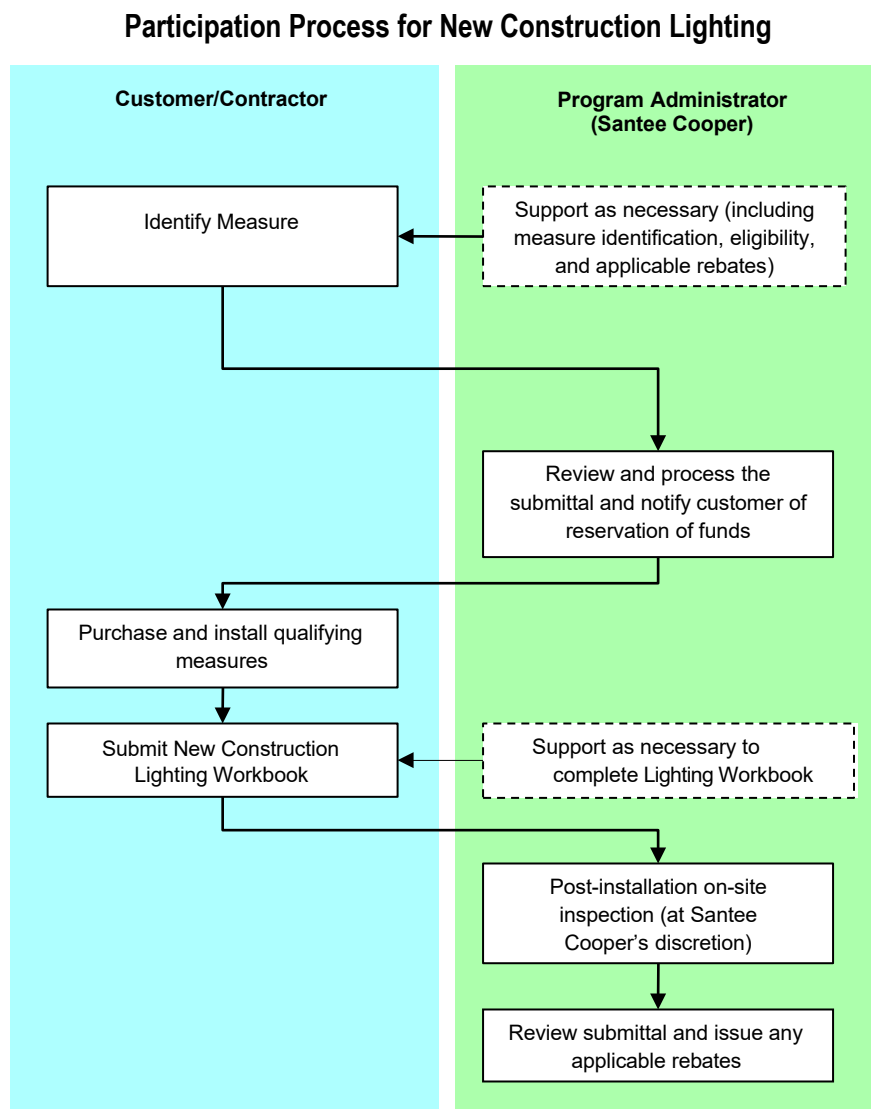
3.2.2 New Construction Lighting Measures

Customers with eligible new construction lighting measures can participate in this Rebate Program following these basic steps:

- **Step 1:** Complete the new construction project, including purchasing and installing the qualifying measures
- **Step 2:** Submit New Construction Lighting Workbook along with all other required documentation including W9 form with valid Tax ID

Figure 3-2 below shows a graphical representation of the participation process.

Figure 3-2:



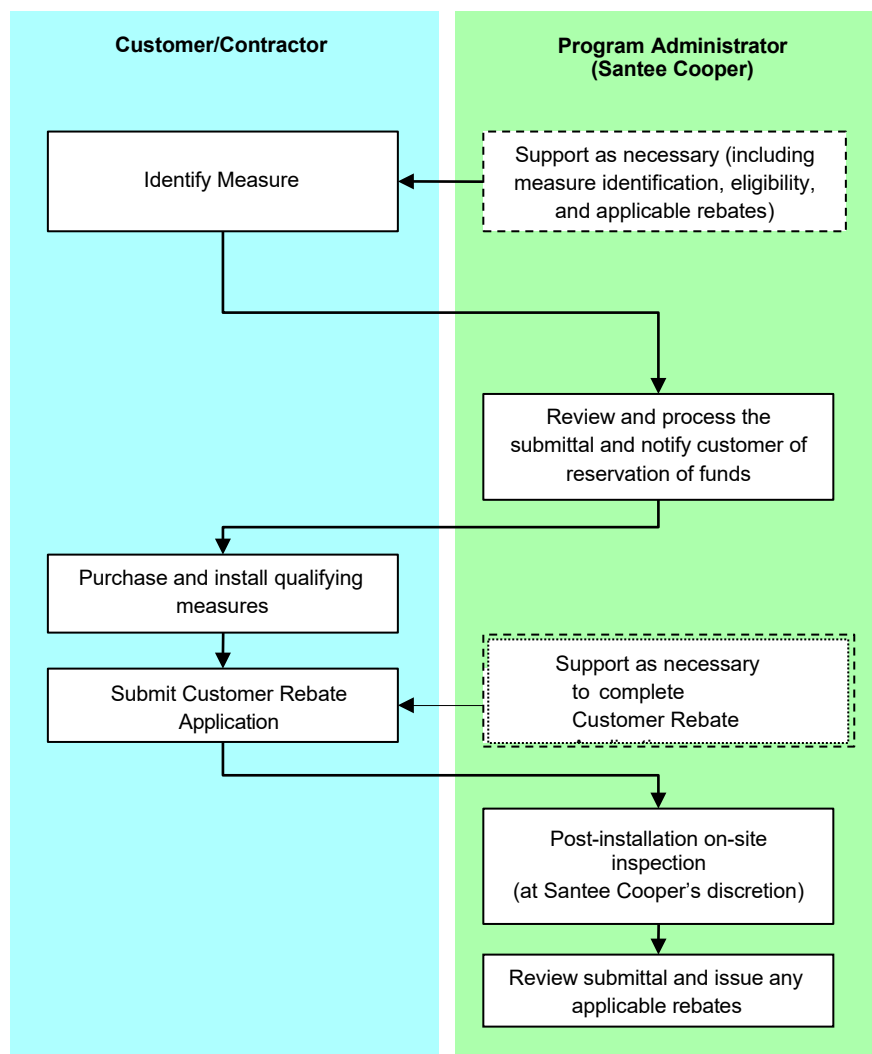
3.2.3 HVAC and Other Measures

Customers with HVAC and other measures can participate in this Rebate Program by following these basic steps:

- **Step 1:** Purchase and install the qualifying measures
- **Step 2:** Submit a Customer Rebate Application and all required documentation including W9 form with valid Tax ID

Figure 3-3 below shows a graphical representation of the participation process.

Figure 3-3: Participation Process for HVAC and Other Measures



3.2.4 Submittals

All required documentation should be sent to:

- Email: commercial.energy@santeecooper.com
- Mail: Santee Cooper Energy Support Services
305-A Gardner Lacy Road
Myrtle Beach, SC 29579

Questions about the Rebate Program should be directed to one of the following:

- **Website:** www.empowerSCbusiness.com
- **Trade Ally Portal:** www.empowerSC4business.com
- **Phone:** (843)347-3399 ext. 3910 (Horry and Georgetown Counties)
and (843)761-8000 ext. 3910 (Berkeley County)
- **Email:** commercial.energy@santeecooper.com

3.2.5 Site Inspections

Santee Cooper may inspect the associated facility prior to and/or after installation of qualifying measures. The inspection may include a phone survey and/or site visit. Customers grants Santee Cooper reasonable access to the relevant facility during normal business hours for inspection purposes. Discrepancies on any submitted documentation or incorrect installation may delay or void rebate payment. Customers will be notified upon completion of the inspection if discrepancies are identified.

For Program quality control, Santee Cooper may conduct site visits and/or phone surveys to evaluate and/or monitor the rebated measures at any time up to two years after work is completed. Such visits may include the installation of temporary monitoring equipment. Customers must allow Santee Cooper and its sub-contractors reasonable access to the associated facility during normal business hours for evaluations and/or monitoring equipment installations.

3.3 Trade Ally Participation Process

Participating contractors and equipment vendors have the option of becoming a member of Santee Cooper's Trade Ally Program. Advantages of a being a Trade Ally include:

- Contact information on the Santee Cooper's website
- Free Program training
- Rebate Program information and updates
- Marketing privileges

For more information, contact Santee Cooper's Trade Ally Coordinator at:

- **Email:** conservation@santeecooper.com or
- **Phone:** (843)347-3399 ext. 3910 (Horry and Georgetown Counties)
(843)761-8000 ext. 3910 (Berkeley County)
Ask to speak to a Trade Ally Coordinator.

Detailed information on measure eligibility, rebate amounts, and participation information are provided in the following Equipment Catalogs:

- Lighting equipment
- HVAC equipment (includes variable frequency drives (VFDs) for HVAC equipment)
- Commercial Refrigeration and Kitchen equipment (includes ENERGY STAR[®] qualified commercial appliances)
- Domestic Hot Water equipment
- Pumps and Motors
- Smart Thermostats

2025 Santee Cooper Commercial Prescriptive Rebate Program Lighting Equipment Catalog

LIGHTING IMPROVEMENT MEASURES

This Lighting Equipment Catalog describes the eligibility requirements and rebate amounts for qualifying lighting equipment, occupancy sensors, daylight sensors, and dimming sensors under Santee Cooper's Commercial Prescriptive Rebate Program ("Rebate Program"). It also includes instructions on how to complete the Customer Rebate Application and information regarding any required additional documentation. This Rebate Program provides rebates for many types of energy efficient technologies. Please read the following sections carefully to ensure that you purchase and install qualifying equipment.

In order to qualify for rebates through this Rebate Program, all equipment and work must meet the following requirements:

- Equipment and materials must be purchased, and all work initiated between December 1, 2024 and November 30, 2025, with work and Customer Rebate Applications completed by November 30, 2025.
- Qualifying equipment and materials employed must be new.
- Qualifying measures must be completed in a manner that meets or exceeds all applicable code⁴ and regulatory requirements.
- The equipment that is removed and replaced with more energy efficient equipment cannot be re-installed elsewhere and must be disposed of in accordance with all applicable local, state, and federal codes and regulations.
- Measure may be installed in either retrofit or new construction/major renovation applications subject to limitations pertaining to each measure listed in this catalog.

Pre-qualification of eligible measures under this Rebate Program **is required for retrofit lighting equipment, occupancy sensors and daylight sensors, and dimming sensors.** Additional eligibility and submittal requirements for lighting technologies, including new construction lighting projects, are outlined in this Equipment Catalog.

Rebates for additional measures may be available. For more information about Santee Cooper rebates, eligibility requirements, rebate levels, other Santee Cooper energy-efficiency programs, or general inquiries, visit the program's website at www.empowerSCbusiness.com, email us at commercial.energy@santeecooper.com, or contact Santee Cooper at (843)347-3399 ext. 3910 (Horry and Georgetown Counties) or (843)761-8000 ext. 3910 (Berkeley County).

LIGHTING EQUIPMENT

Measure Description: Lighting technologies are constantly improving. Older lighting systems are typically less efficient and may cost considerably more to operate than newer efficient technologies available today. Careful application of readily available LED lighting equipment can produce significant long-term energy savings while providing excellent lighting quality for Lighting Retrofit projects.

Applicability: Rebates are available for qualified lighting equipment installed as part of a new construction or retrofit project. *Lighting retrofit project applicants must submit a Retrofit Lighting Workbook prior to equipment purchase and installation. New Construction Lighting projects require the submittal of a New Construction Lighting Workbook in electronic format.*

Equipment Eligibility: LED lighting equipment that results in a verifiable installed wattage reduction is eligible for a rebate, provided that the following criteria are met:

⁴Qualifying lamps are listed on CEE's website at <http://library.cee1.org/content/commercial-lighting-qualifying-products-lists>.

Retrofit Lighting:

- **Tier 1 – Certified Lighting**

To qualify for Tier 1 rebate, the lighting product submitted must be listed on at least one of the approved Qualified Product List options: ENERGY STAR® or DesignLights Consortium (DLC). Documentation of LED product listing must be included for each product type submitted for rebates and must be included as a part of the submitted project documentation. Tier 1 lighting rebate is \$0.40 per watt reduced as calculated by the Retrofit Lighting Workbook.

- **Tier 2 – Non-Certified Lighting**

All lighting that is not certified by ENERGY STAR® or DLC is considered Non-Certified Lighting and qualifies for a Tier 2 rebate. The Tier 2 lighting rebate is \$0.20 per watt reduced as calculated by the Retrofit Lighting Workbook.

Note: Underwater LED Lighting has its own rebates and therefore does not qualify for this rebate.

Retrofit work involving de-lamping is eligible provided that the capability to re-install additional lamps into a fixture is eliminated (this includes permanent removal of lamp, ballast, socket, and/or luminaires) and is accompanied by an upgrade to qualifying lighting equipment at the same time.

Customers are strongly encouraged to confirm with contractors/vendors that a manufacturer's or installer's warranty on this type of equipment will be honored.

Ineligible Lighting Measures:

- Measures with energy savings due solely to behavioral changes
- Installation of T12, T8, or T5 fluorescent lighting technology
- Installation of screw base, pin base, or any other ANSI base lamps including but not limited to incandescent lamps, compact fluorescent lamps (CFL's), and LED lamps
- Standard metal halide or any high-pressure sodium lighting fixture
- De-lamping without upgrading to qualifying lighting equipment

Instructions for Retrofit Application: Retro Lighting projects require the submittal of a Retro Lighting Workbook in electronic format for pre-approval by Santee Cooper.

- Obtain a copy of the Retrofit or New Construction Lighting Workbook in one of the following ways:
 - Download from the Santee Cooper website (recommended)
 - Contact the Trade Ally Coordinator
 - Contact a participating Trade Ally or contractor
- **Before the work is started**, follow the instructions accompanying the Lighting Workbook and submit the Lighting Workbook with the project “as planned”. The completed Lighting Workbook spreadsheet will automatically calculate the electrical reduction and rebate amount expected from your lighting project. This Lighting Workbook should be filled in by the contractor performing the work.
- **For New Construction only**, the baseline interior lighting power densities are shown in Table L-1 (below). These amounts are compared with the actual installed lighting to arrive at the savings difference for the new construction rebate. The completed Lighting Workbook automatically computes the electrical reduction. Exterior lighting, used in new construction, is ineligible for Santee Cooper rebate.
- Upon receiving approval of the “as planned” Lighting Workbook by Santee Cooper, you may purchase and install eligible equipment.
- After completion of project, submit “As Installed” Retrofit Lighting Workbook.
- Along with “As Installed” Lighting Workbook, submit the following items:
 - Dated sales receipt or paid invoice including material and labor as applicable.
 - For Tier 1 LED lighting, include documentation such as a specification sheet demonstrating ENERGY STAR® or Design Lights Consortium (DLC) qualification
 - Signed terms and Conditions
 - W9 Form with Tax ID

Note: Santee Cooper does NOT endorse any of the LED products on the above-mentioned lists. Santee Cooper reserves the right to review, approve and/or reject any LED product on a case-by-case basis.

Table L-1: Baseline Lighting Power Densities for New Construction Measures

Building Area Type	W/ft ²	Building Area Type	W/ft ²
Automotive Facility	0.9	Multi-Family	0.7
Convention Center	1.2	Museum	1.1
Court House	1.2	Office	1.0
Dining: Bar Lounge/Leisure	1.3	Parking Garage	0.3
Dining: Cafeteria/Fast Food	1.4	Penitentiary	1.0
Dining: Family	1.6	Performing Arts Theater	1.6
Dormitory	1.0	Police/Fire Station	1.0
Exercise Center	1.0	Post Office	1.1
Gymnasium	1.1	Religious Building	1.3
Healthcare-Clinic	1.0	Retail	1.5
Hospital	1.2	School/University	1.2
Hotel	1.0	Sports Arena	1.1
Library	1.3	Town Hall	1.1
Manufacturing Facility	1.3	Transportation	1.0
Motel	1.0	Warehouse	0.8
Motion Picture Theater	1.2	Workshop	1.4

OCCUPANCY & DAYLIGHT SENSORS & DIMMING SENSORS

Measure Description: Modern available lighting Occupancy sensors, Daylight sensors and Dimming Sensors can reduce electrical energy consumption by reliably turning off appropriate lighting equipment when an area is unoccupied or suitably lit by sunlight. This can reduce costs by saving electricity used to run the lights.

Applicability: Rebates on new construction and retrofit occupancy, daylight sensors and dimming sensors installed in buildings are available where not required by ASHRAE 90.1-2007.

Equipment Eligibility: Rebates will be offered to customers installing lighting controls as a part of retrofit or new construction/major renovation projects provided the measures meet the following requirements:

1. Sensors must be new and installed in a manner that meets or exceeds applicable code regulations
2. Sensors must be hard-wired and permanently installed (no plug-based devices)
3. Daylight and dimming sensors must automatically adjust the light levels based on ambient light levels or occupancy.
4. Installations must comply with manufacturer's guidelines on coverage and maximum controlled watts.
5. Dimming sensor requirements apply to both interior and exterior lighting.

The eligibility criteria for daylight sensors and dimming sensors are:

1. Daylight sensors and dimming sensors must control a minimum of 45 watts

The eligibility criteria for lighting occupancy sensors are:

1. Sensors should be passive infrared, ultrasonic, or dual technology
2. Fixture-mounted sensors must control a minimum of 30 watts
3. Wall-mounted sensors must control a minimum of 30 watts
4. Ceiling-mounted sensors must control a minimum of 175 watts
5. Bi-level lighting controls must control a minimum of 45 watts
6. Sensors or installations with the ability to disable sensor function (other than for maintenance) are NOT eligible

Instructions for Customer Rebate Application: The Customer Rebate Application for lighting technologies is *not* the same as the application for all other measures. **Qualified Lighting Sensor projects require the submittal of a Lighting Workbook in electronic format for pre-approval by Santee Cooper.** Lighting Sensor projects that are part of another qualified Lighting Project can be included in that Project's Lighting Workbook. This is a computer spreadsheet file which should be downloaded from the Santee Cooper website (www.empowerSCbusiness.com) or obtained by contacting the Program Administrator or a participating Trade Ally or contractor. Follow the instructions accompanying the appropriate Lighting Workbook. The filled in Lighting Workbook spreadsheet will automatically calculate the rebate amount expected from your lighting sensor project.

This Lighting Workbook should be filled in by the contractor performing the work and must be signed by the Santee Cooper customer requesting the rebate. The following items must also be submitted with the Lighting Workbook:

- Dated sales receipt or paid invoice including materials and labor as applicable
- Manufacturer's equipment specification sheet demonstrating compliance with equipment eligibility requirements

Measure Rebate: Rebate amounts for qualifying occupancy sensors are located in Table L-2:

Table L-2: Lighting Controls Rebate Amounts

Measure	Incentive
Area Day Lighting Controls	\$45 / sensor
Dimming Controls	\$45 / sensor
Building Occupancy Fixture-Mounted Lighting Controls (Infrared and Dual Technology)	\$10 / sensor
Building Occupancy Wall-Mounted Lighting Controls (Infrared and Dual Technology)	\$10 / sensor
Building Occupancy Ceiling-Mounted Lighting Controls (Infrared and Dual Technology)	\$50 / sensor
Building Occupancy Bi-Level Lighting Controls (Infrared and Dual Technology)	\$45 / sensor

LED UNDERWATER LIGHTING

Measure Description: Existing underwater lights can be retrofitted with new LED lamps or replaced by new LED fixtures resulting in decreased energy consumption.

Applicability: Rebates are offered to customers installing new LED lamps or LED fixtures in existing underwater applications.

Equipment Eligibility: Underwater LED lamps or fixtures that result in a verifiable installed wattage reduction are eligible provided that the following criteria are met:

- Lamps and/or fixtures must be rated for pool installations

Instructions for Customer Rebate Application: The Customer Rebate Application for lighting technologies is *not* the same as the application for all other measures. **Underwater LED Lighting projects require the submittal of a Retrofit Lighting Workbook in electronic format for post-install approval by Santee Cooper.** This is a computer spreadsheet file which can be downloaded from the Santee Cooper website (www.empowerSCbusiness.com) or obtained by contacting the Program Administrator or a participating Trade Ally or contractor.

- **Before work is started**, follow the instructions accompanying the Retrofit Lighting Workbook. The completed Retrofit Lighting Workbook spreadsheet will automatically calculate the electrical reduction and rebate amount expected from your lighting project. This Lighting Workbook should be filled in by the contractor performing the work and must have the Terms and Conditions signed by the Santee Cooper customer requesting the rebate.
- During construction, the contractor will need to take detailed pictures of the fixture(s) being removed and the fixture(s) being installed.
- After completion of project, submit “As Installed” Retrofit Lighting Workbook.
- Along with “As Installed” Lighting Workbook, submit dated sales receipt or paid invoice including material and labor as applicable.

Measure Rebate: Rebate amount for lighting equipment upgrades is located in Table L-3:

Table L-3: Lighting Equipment Upgrades Rebate Amount

Measure	Incentive
Lighting Equipment Upgrades (based on wattage reduction as computed in Retrofit Lighting Workbook)	\$0.40 / watt reduced

HVAC IMPROVEMENT MEASURES

This HVAC Equipment Catalog describes the eligibility requirements and rebate amounts for qualifying HVAC measures and equipment under Santee Cooper's Commercial Prescriptive Rebate Program (Rebate Program). It also includes instructions on how to complete the Customer Rebate Application and information regarding any required additional documentation. This Rebate Program provides rebates for many types of energy efficient technologies. Please read the following sections carefully to ensure that you purchase and install qualifying equipment.

In order to be eligible for rebates through this Rebate Program, all equipment must meet the following requirements:

- Equipment and materials must be purchased and all work initiated between December 1, 2024 and November 30, 2025, completion of work and Customer Rebate Applications must be finalized by November 30, 2025.
- Qualifying equipment and materials must be new.
- Qualifying measures must be completed in a manner that meets or exceeds all applicable code and regulatory requirements.
- The equipment that is removed and replaced with more energy-efficient equipment cannot be re-installed elsewhere and must be disposed of in accordance with all applicable local, state, and federal codes and regulations.
- Measure may be installed in either retrofit or new construction/major renovation applications subject to limitations pertaining to each measure listed in this catalog section.

Pre-qualification of HVAC eligible measures under this Rebate Program is not required. Additional eligibility and submittal requirements for HVAC technologies are outlined in this Equipment Catalog.

Rebates for additional measures may be available. For more information about Santee Cooper rebates, eligibility requirements, rebate levels, other Santee Cooper energy efficiency programs, or general inquiries, visit the program's website at www.empowerSCbusiness.com, email us at commercial.energy@santeecooper.com, or contact Santee Cooper at (843)347-3399 ext. 3910 (Horry and Georgetown Counties) or (843)761-8000 ext. 3910 (Berkeley County).

SINGLE-PHASE SPLIT AND PACKAGED AIR-COOLED HEAT PUMPS

Measure Description: Higher efficiency heat pumps use less electricity than and perform as well as standard units. The electricity saved through greater efficiency can pay dividends for years through lower operating costs.

Applicability: New construction and retrofit installations

Equipment Eligibility: Residential type, single-phase split and packaged heat pumps are eligible for rebates if they are air-cooled units that meet or exceed **all** the applicable efficiency ratings shown in Table H-1 at Air-Conditioning, Heating, and Refrigeration Institute (AHRI) Standard Rating Conditions. . The efficiencies listed in Table H-1 are better than the code requirements stated in Code of Federal Regulations, Title 10, Section 430.32 and therefore only high efficiency heat pumps are eligible for Santee Cooper rebate. Residential type, single-phase split and packaged air conditioning units are not eligible for rebates under this program

Window and room air conditioners are **not** eligible for these rebates.

Units located within **½ mile of the oceanfront, or within the distance recommended by the equipment manufacturer (whichever is greater)** must have corrosion resistant outside coil materials or coils coated with a factory-applied (or equal), anti-corrosive coating. Corrosion resistance must meet or exceed ASTM B117.85 standards.

Rebates:

Two levels of rebates are available for single phase air-cooled heat pumps based on the AHRI-rated cooling capacity of the installed equipment. Rebates will be paid for the highest efficiency level for which the unit qualifies. The rebate levels are listed in Table H-1 below.

**Table H-1: Eligibility Requirements and Rebate Amount for
Single Phase Air-to-Air Unitary Heat Pumps**

Tier	System Type	Equipment Code	Efficiency Requirement	Rebate Per Unit
Tier 1	Split/Packaged System	HP1P15T1	Split System: ≥ 15.3 SEER2, ≥ 7.8 HSPF2 Packaged System: ≥ 14.4 SEER2, ≥ 6.9 HSPF2	\$300 per system
Tier 2	Split/Packaged System	HP1P17T2	Split System: ≥ 16.3 SEER2, ≥ 8.2 HSPF2 Packaged System: ≥ 15.3 SEER2, ≥ 6.9 HSPF2	\$400 per system

One rebate is available for Water Source Heat Pumps based on the AHRI-rated cooling capacity of the installed equipment. The rebate levels are listed in Table H-2 below.

Table H-2: Eligibility and Rebate Amount for Water Source Heat Pumps

System Type	Equipment Code	Efficiency Requirement	Rebate Per Unit
Water Source Heat Pump	WSHP16	≥ 16 SEER, 4.4 COP	\$200

Items to submit with Customer Rebate Application:

- Dated sales receipt or paid invoice including materials and labor as applicable
- Manufacturer's specification sheets documenting full-load and part-load efficiency or unit AHRI reference number(s)
- Documentation supporting ASTM B117.85 anticorrosive coating installed on coils or corrosion resistant coil materials, if required based on proximity to the oceanfront

Instructions for Customer Rebate Application: On the Customer Rebate Application note the "Efficiency" as the AHRI SEER, EER and HSPF/COP values, and the "Measure Size" as the AHRI-rated cooling capacity at Standard Test Conditions in tons (1 ton = 12,000 Btu/h).

3 PHASE AIR-COOLED HEAT PUMPS AND UNITARY AIR CONDITIONERS

Measure Description: Higher efficiency heat pumps and air conditioners use less electricity but perform as well as standard units. The electricity saved through greater efficiency can pay dividends for years through lower operating costs.

Applicability: New construction and retrofit installations

Equipment Eligibility: Refer to Appendix E for three-phase commercial air-cooled heat pumps and unitary air conditioners eligibility requirements. Equipment must be efficiency rated by AHRI, meet applicable AHRI standards, be UL listed and use a minimum ozone-depleting refrigerant. Split system equipment components must comprise a matched system per AHRI. Eligible equipment must also have a manufacturer's commissioning form completed during equipment installation and testing.

Units located within **½ mile of the oceanfront, or within the distance recommended by the equipment manufacturer (whichever is greater)** must have corrosion resistant outside coil materials or coils coated with a factory-applied (or equal), anti-corrosive coating. Corrosion resistance must meet or exceed ASTM B117.85 standards.

Rebates: Rebate amount for 3-Phase Split and Package Unitary Systems is located in Table H-3:

Table H-3: 3-Phase Split and Package Unitary Systems Rebate Amount

Measure	Incentive
3-phase split and package unitary systems (based on energy savings achieved relative to code-compliant equipment, as computed in HVAC Calculator)	\$0.30 / kWh saved

Items to submit with Customer Rebate Application:

1. Santee Cooper HVAC Calculator
2. Dated sales receipt or paid invoice including materials and labor as applicable
3. Manufacturer's specification sheets documenting full-load and part-load efficiency or unit AHRI reference number(s)
4. Documentation supporting ASTM B117.85 anticorrosive coating installed on coils or corrosion resistant coil materials, if required based on proximity to the oceanfront

Instructions for Customer Rebate Application: On the Customer Rebate Application note the "Efficiency" as the AHRI SEER, EER and HSPF/COP values, and the "Measure Size" as the AHRI-rated cooling capacity at Standard Test Conditions in tons (1 ton = 12,000 Btu/h).

VARIABLE REFRIGERANT FLOW/MINI-SPLIT SYSTEMS

Measure Description: Variable refrigerant flow (VRF) systems are equipped with a variable speed DC compressor that is powered through an inverter drive. This technology allows the compressor to vary speed so that it is only delivering the optimum amount of refrigerant to the system according to the cooling (or heating) load. These systems can have single or multiple fan/coil units.

Applicability: New construction and retrofit installations

Equipment Eligibility: VRF/Mini-split systems are eligible for rebates if they meet or exceed **all** of the applicable efficiency ratings shown in Table H-4 for air conditioning units and Table H-5 for heat pump units at Air-Conditioning, Heating, and Refrigeration Institute (AHRI) Standard 1230 Rating Conditions.

Equipment must be efficiency rated by AHRI, meet applicable AHRI standards, be UL listed and use a minimum ozone-depleting refrigerant. Split system equipment components must comprise a matched system per AHRI.

Units located within $\frac{1}{2}$ mile of the oceanfront, or within the distance recommended by the equipment manufacturer (whichever is greater) must have corrosion resistant outside coil materials or coils coated with a factory-applied (or equal), anti-corrosive coating. Corrosion resistance must meet or exceed ASTM B117.85 standards.

Items to submit with Customer Rebate Application:

1. Santee Cooper HVAC Calculator
2. Dated sales receipt or paid invoice including materials and labor as applicable
3. Manufacturer's specification sheets documenting full-load and part-load efficiency or unit AHRI reference number(s)
4. Documentation supporting ASTM B117.85 anticorrosive coating installed on coils or corrosion resistant coil materials, if required based on proximity to the oceanfront

Instructions for Customer Rebate Application: On the Customer Rebate Application note the "Efficiency" as the AHRI SEER, EER and HSPF/COP values, and the "Measure Size" as the AHRI-rated cooling capacity at Standard Test Conditions in tons (1 ton = 12,000 Btu/h).

Measure Rebate: Equipment that meets all minimum efficiency criteria listed in Table H-4 below will be paid an equipment rebate of \$250/ton.

Table H-4: Eligibility Requirements and Rebate Amounts for VRF/Mini-Split Air Conditioners

AC Size	Equipment Code	Minimum Efficiency Requirements
< 65,000 Btu/h	ACVRF65	14.0 SEER
$\geq 65,000$ Btu/h and < 135,000 Btu/h	ACVRF135	Refer to Appendix E
$\geq 135,000$ Btu/h and < 240,000 Btu/h	ACVRF240	Refer to Appendix E
$\geq 240,000$ Btu/h	ACVRFL	Refer to Appendix E

Table H-5: Eligibility Requirements and Rebate Amounts for VRF/Mini-Split Heat Pumps

AC Size	Equipment Code	Minimum Efficiency Requirements
<65,000 Btu/h	HPVRF65	14.0 SEER 8.0 HSPF
≥65,000 Btu/h and <135,000 Btu/h	HPVRF135	Refer to Appendix E
≥135,000 Btu/h and <240,000 Btu/h	HPVRF240	Refer to Appendix E
≥135,000 Btu/h and <240,000 Btu/h with heat recovery	HPVRF240R	Refer to Appendix E
≥240,000 Btu/h	HPVRFL	Refer to Appendix E
≥240,000 Btu/h with heat recovery	HPVRFLR	Refer to Appendix E

VARIABLE FREQUENCY DRIVES FOR HVAC

Measure Description: Variable Frequency Drives (VFDs) are electronic controls that regulate motor speed and torque, resulting in reduced energy consumption under variable load conditions. This can reduce electrical use and may increase equipment life.

Applicability: Rebates are offered to customers installing VFDs on HVAC equipment in a retrofit application provided that the following additional criteria are met:

- VFDs are installed on motors capable of reduced speed operation
- VFDs are installed on motors in air handling units greater than or equal to 1 horsepower and less than or equal to 200 horsepower
- Previously installed throttling or bypass devices used as system load controls such as inlet vanes, bypass dampers, three-way valves, or throttling valves are permanently removed or disabled
- VFD speed is automatically controlled by appropriate means, such as: differential pressure, flow, or temperature

Measure Eligibility: Motors must operate more than 2,000 hours per year. Used or refurbished VFDs, VFDs required by IECC 2009, and VFDs on chillers are not eligible for this rebate.

The following VFD measures are *excluded* from consideration for rebates:

- Variable frequency drives required by IECC 2009 (e.g., VAV fan motors greater than 10 horsepower in new construction projects)
- VFDs on chillers
- Fan and pump operations that would otherwise be regulated by on/off cycling
- Used or rebuilt VFDs, or VFDs in New Construction projects
- Motors with less than 2,000 annual operating hours

Items to submit with Customer Rebate Application:

1. Dated sales receipt or paid invoice including materials and labor as applicable
2. Manufacturer's specification sheets documenting full-load and part-load efficiency or unit AHRI

Instructions for Customer Rebate Application: In the Customer Rebate application, mark the "Efficiency" as "NA" and the "Measure Size" as the nameplate motor size of the affected motor.

Measure Rebate: Rebate amount for qualifying measures is listed below in Table H-6.

Table H-6: VFD Rebate Amount

Equipment Code	Measure Description	Unit	Rebate
VFD	HVAC VFD 1 ≤ and ≤ 200 HP	HP	\$50 / HP

PACKAGED TERMINAL UNITS

Measure Description: Packaged Terminal Air Conditioners (PTACs) and Packaged Terminal Heat Pumps (PTHPs) are designed primarily to provide complete cooling or cooling and heating for a room or small zone and are specifically for permanent through-the-wall installation. These electrically-powered units are generally sized under 13,500 Btu/hr, are typically designed to be installed in a separate through-the-wall sleeve on an exterior wall and are typically found in hotels. This is not the same as a window unit air conditioner or heat pump adapted for through-the-wall use. Higher efficiency units generally cost less to operate.

Applicability: New construction and retrofit installations

Equipment Eligibility: PTAC and PTHP units must have ARI²-certified efficiencies that meet or exceed the minimum requirements shown in Table H-7. Heat Pumps must meet both efficiency requirements. Equipment must be correctly sized, purchased new and installed, and meet all other program terms and conditions.

All units located within ½ mile of the oceanfront, or within the distance recommended by the equipment manufacturer (whichever is greater) must have corrosion resistant outside coil materials or coils coated with a factory-applied (or equal), anti-corrosive coating. Corrosion resistance must meet or exceed ASTM B117.85 standards.

Items to submit with Customer Rebate Application:

1. Santee Cooper HVAC Calculator
2. Dated sales receipt or paid invoice including materials and labor as applicable
3. Manufacturer's specification sheets documenting full-load and part-load efficiency or unit AHRI reference number(s)
4. Documentation supporting ASTM B117.85 anticorrosive coating installed on coils or corrosion resistant coil materials, if required based on proximity to the oceanfront

Instructions for Customer Rebate Application: In the Customer Rebate Application, mark the "Efficiency" as the ARI-rated EER (and COP for PTHP units) and the "Measure Size" as the ARI-rated cooling capacity at Standard Test Conditions in Btu/hr (1 ton = 12,000 Btu/hr).

Measure Rebate: Rebate amounts for qualifying measures are listed below in Table H-7.

Table H-7: PTAC and PTHP Efficiency Requirements and Rebate Amounts

Equipment Type	Size Category	Equip. Code	Minimum Efficiency Requirement	Rebate (\$/ton)
Package Terminal Air Conditioners (PTAC)	≤ 8,000 Btu/hr	PTAC80	Refer to Appendix E	\$50
	> 8,000 and ≤ 10,500 Btu/hr	PTAC105	Refer to Appendix E	
	> 10,500 and ≤ 13,500 Btu/hr	PTAC135	Refer to Appendix E	
	> 13,500 Btu/hr	PTACL	Refer to Appendix E	
Package Terminal Heat Pumps (PTHP)	≤ 8,000 Btu/hr	PTHP80	Refer to Appendix E	
	> 8,000 and ≤ 10,500 Btu/hr	PTHP105	Refer to Appendix E	
	> 10,500 and ≤ 13,500 Btu/hr	PTHP135	Refer to Appendix E	
	> 13,500 Btu/hr	PTHPL	Refer to Appendix E	

HVAC CONTROLS

Measure Description: Installing HVAC controls such as advanced rooftop controls, demand control ventilation, and economizers save energy by allowing for more precise control of the HVAC system, so that it is running only when needed and taking advantage of ideal outdoor conditions for free cooling. Demand controlled ventilation uses sensors to ventilate an area only when needed, rather than always running a fan. Economizers take advantage of outdoor air that is below the indoor setpoint temperature in order to provide free cooling to a building. Additionally, advance rooftop controls allow for remote monitoring of the system, enabling control of fan speed, economizers, and thermostats in order to efficiently run the HVAC system.

Applicability: New construction and retrofit installations

Equipment Eligibility: HVAC equipment must not have an existing control system of the same type.

Items to submit with Customer Rebate Application:

1. Dated sales receipt or paid invoice including materials and labor as applicable
2. Manufacturer's specification sheets demonstrating compliance with equipment eligibility requirements

Instructions for Customer Rebate Application: In the Customer Rebate Application, mark the "Efficiency" as "N/A".

Measure Rebate: Rebate amounts for qualifying measures are listed below in Table H-8

Table H-8: HVAC Controls Rebates

Equipment Code	Measure Description	Unit	Rebate
DCV	Demand Controlled Ventilation	System	\$550 / System
DEE	Dual Enthalpy Economizer	System	\$150 / System
ARC	Advanced Rooftop Controls	System	\$580 / System

HOTEL ROOM KEY CARD ENERGY MANAGEMENT SYSTEM

Measure Description: Hotel Room Key Card Energy Management Systems work by turning the HVAC system on to occupied mode when people enter the hotel room and switches it back to an unoccupied mode when they leave. This works by having a slot in the entryway to place the key in, which activates the HVAC system.

Applicability: New construction and retrofit installations

Equipment Eligibility: The key card management system must have the ability to change the in-room thermostat between an occupied setting when a guest enters the room and an un-occupied setting, which will set back the room temperature when the guest leaves.

Items to submit with Customer Rebate Application:

1. Dated sales receipt or paid invoice including materials and labor as applicable
2. Manufacturer's specification sheets demonstrating compliance with equipment eligibility requirements

Instructions for Customer Rebate Application: In the Customer Rebate Application, mark the "Efficiency" as "N/A." For "Number of Measures," enter the number of rooms with the key card switch installed, and enter Equipment Code "HRKMS"

Measure Rebate: Rebate amounts for qualifying measures are \$20 per hotel room.

The following is an example for a VFD measure being installed:

Parameter	Measure 1	Measure 2	Measure 3
Equipment code	VFD		
Project type (Retrofit or New Construction)	New Construction		
Installation date	2/1/2025		
Facility Location (Distance from oceanfront)	Mechanical Room		
Location of installed measure (e.g., roof, mechanical room)	Supply Fan		
EE Measure end use (e.g., supply fan, CHW pump)	NA		
Age of replaced equipment (for retrofits)	NA		
Replaced (existing) equipment Manufacturer	NA		
Replaced (existing) equipment Model number	NA		
New equipment Dealer name	Acme VFDs		
New equipment Manufacturer	Widget VFD, LLC		
New Equipment Model number	ABC123		
Annual operating hours ¹	5,304		
Efficiency(ies) (as described in Equipment Catalog)	NA		
EE Measure size (as described in Equipment Catalog)	10		
EE Measure rebate (\$) (e.g., HVAC: \$50/ton*10 tons=\$500)	\$500		
Number of measures	2		
Total rebate (\$) (# of Measures*Measure Rebate)	1000		

Equipment Schedule for VFD's

Days	Hours	Annual Hours
Monday-Friday	6:00-8:00	3,640
Saturday Sunday	6:00-10:00	1,664
	Total	5,304

2025 Santee Cooper Commercial Prescriptive Rebate Program Commercial Refrigeration and Kitchen Equipment Catalog

COMMERCIAL REFRIGERATION AND KITCHEN MEASURES

This Commercial Refrigeration and Appliance Equipment Catalog describes the eligibility requirements and rebate amounts for qualifying **commercial refrigeration equipment efficiency upgrades and ENERGY STAR® qualified commercial appliances** under Santee Cooper's Commercial Prescriptive Rebate Program (Rebate Program). It also includes instructions on how to complete the Customer Rebate Application and information regarding any required additional documentation. This Rebate Program provides rebates for many types of energy efficient technologies. Please read the following sections carefully to ensure that you purchase and install qualifying equipment.

In order to be eligible for rebates through this Rebate Program, all equipment and work must meet the following requirements:

- Equipment and materials must be purchased and all work initiated between December 1, 2024 and November 30, 2025, completion of work and Customer Rebate Applications must be finalized by November 30, 2025.
- Qualifying equipment and materials must be new.
- Qualifying measures must be completed in a manner that meets or exceeds all applicable code and regulatory requirements.
- Any equipment that is removed and replaced with more energy efficient equipment cannot be re-installed elsewhere and must be disposed of in accordance with all applicable local, state, and federal codes and regulations.
- Measures may be installed in either retrofit or new construction/major renovation applications subject to limitations pertaining to each measure listed in this catalog section.

Pre-qualification of eligible refrigeration and appliance measures under this Rebate Program is not required. Additional eligibility and submittal requirements for commercial refrigeration and appliance technologies are outlined in this Equipment Catalog.

Rebates for additional measures may be available. For more information about Santee Cooper rebates, eligibility requirements, rebate levels, other Santee Cooper energy efficiency programs, or general inquiries, visit the program's website at www.empowerSCbusiness.com, email us at commercial.energy@santeecooper.com, or contact Santee Cooper at (843)347-3399 ext. 3910 (Horry and Georgetown Counties) or (843)761-8000 ext. 3910 (Berkeley County).

LED DISPLAY CASE LIGHTING

Measure Description: Most refrigerated cases are illuminated to provide better view of the product. LED lighting can be installed to increase lighting efficacy and reduce heat load on the refrigeration compressors.

Applicability: Retrofit installations only

Measure Eligibility: Lighting must replace a T12 or T8 lamp in a display case and include appropriate high efficiency ballast (or LED power supply).

Items to submit with Customer Rebate Application:

1. Dated sales receipt or paid invoice including materials and labor as applicable
2. Manufacturer's specification sheets demonstrating compliance with equipment eligibility requirements

Instructions for Customer Rebate Application: On the Customer Rebate Application note the “Efficiency” as “NA” and the “Measure Size” as the total number of lamps installed.

Measure Rebate: Rebate amount for qualifying measures as listed below in Table R-1.

Table R-1: High Efficiency Case Lighting Rebate Amounts

Equipment Code	Measure Description	Unit	Rebate
T12RFLLED	T12 retrofit to LED Lighting for Display Case	Lamp	\$10 / lamp
T8RFLLED	T8 retrofit to LED Lighting for Display Case	Lamp	\$8 / lamp

ELECTRONICALLY COMMUTATED MOTORS

Measure Description: An electronically commutated motor (ECM) is a fractional horsepower direct current (DC) motor used most often in commercial refrigeration applications such as refrigeration and display cases. ECMs use less electricity than standard motors.

Applicability: New construction and retrofit installations

Measure Eligibility: All ECMs installed in refrigeration cases up to 1 HP in size may qualify for an incentive. This rebate is not available when rebates are paid for high-efficiency display cases.

Items to submit with Customer Rebate Application:

1. Dated sales receipt or paid invoice including materials and labor, as applicable
2. Manufacturer’s equipment specification sheet

Instructions for Customer Rebate Application: On the Customer Rebate Application, mark the “Efficiency” as “NA” and the “Measure Size” as the nameplate motor size.

Measure Rebate: Rebate amount for qualifying measures is listed below in Table R-2.

Table R-2: Electronically Commutated Motor (ECM) Rebate Amount

Equipment Code	Measure Description	Unit	Rebate
ECMREF	Refrigeration Application	Motor	\$50 / motor

REFRIGERANT SUCTION LINE INSULATION

Measure Description: The suction line of refrigerators and freezers moves the refrigerant gas from the evaporator coil to the condenser, where it will become liquid. Insulating this line helps the refrigerator and freezer to run more efficiently by not allowing the suction line to pick up extra heat that will need to be cooled later.

Applicability: New construction and retrofit installations

Measure Eligibility: Existing refrigerant suction line must not have any insulation in order to qualify for this rebate. The installed insulation must be between ½ and 1 inch. Insulation must be installed in accordance with the manufacturer’s guidelines.

Items to submit with Customer Rebate Application:

1. Dated sales receipt or paid invoice including materials and labor as applicable
2. Manufacturer’s equipment specification sheet

Instructions for Customer Rebate Application: On the Customer Rebate Application, mark the “Equipment Code” as “REFSL”, the “Efficiency” as “NA” and the “Measure Size” as the thickness of the insulation. Quantity should be marked as the number of linear feet.

Measure Rebate: Rebate amount for Suction Line Insulation is located in Table R-3.

Table R-3: Suction Line Insulation Rebate Amount

Measure	Incentive
Qualifying Suction Line Insulation	\$3 / linear foot

ENERGY STAR® REFRIGERATORS AND FREEZERS

Measure Description: Many facilities use commercial refrigerators and freezers in their operation. ENERGY STAR® qualified refrigerators and freezers are generally more efficient. Refrigerators and freezers are in constant use. Higher efficiency means less electricity used.

Applicability: New construction and retrofit installations

Equipment Eligibility: Refrigerators must be ENERGY STAR® qualified glass or solid door commercial refrigerators. Freezers must be ENERGY STAR® qualified glass or solid door commercial freezers.

Items to submit with Customer Rebate Application:

1. Dated sales receipt or paid invoice including materials and labor as applicable
2. Manufacturer’s specification sheets demonstrating compliance with equipment eligibility requirements

Instructions for Customer Rebate Application: On the Customer Rebate Application, mark the “Efficiency” as “NA”.

Measure Rebate: Rebate amount for qualifying measures is listed below in Table R-4.

Table R-4: ENERGY STAR® Refrigerator and Freezer Rebate Amounts

Equipment Code	Measure Description	Unit	Rebate
APCF	ENERGY STAR® glass or solid-door commercial freezer	Freezer	\$70 / Freezer
APCRG	ENERGY STAR® glass-door commercial refrigerator	Refrigerator	\$70 / Refrigerator
APCRS	ENERGY STAR® solid-door commercial refrigerator	Refrigerator	\$70 / Refrigerator

ENERGY STAR® KITCHEN APPLIANCES

Measure Description: Restaurants use many appliances in their day-to-day operation. ENERGY STAR® certified kitchen appliances save electricity, water, and gas when compared to conventional appliances

Applicability: New construction and retrofit installations

Equipment Eligibility: Kitchen appliances must be ENERGY STAR® qualified.

Items to submit with Customer Rebate Application:

1. Dated sales receipt or paid invoice including materials and labor as applicable
2. Manufacturer's specification sheets demonstrating compliance with equipment eligibility requirements

Instructions for Customer Rebate Application: On the Customer Rebate Application, mark the "Efficiency" as "NA"

Measure Rebate: Rebate amount for qualifying measures is listed below in Table R-5.

Table R-5: ENERGY STAR® Kitchen Appliance Rebate Amounts

Equipment Code	Measure Description	Unit	Rebate
KCMO	ENERGY STAR® Combination Oven (Convection and Steam)	Oven	\$200 / Oven
KCO	ENERGY STAR® Convection Oven	Oven	\$200 / Oven
KDW	ENERGY STAR® Dishwasher	Dishwasher	\$250 / Dishwasher
KG	ENERGY STAR® Griddle	Griddle	\$100 / Griddle
KHFC	ENERGY STAR® Hot Food Holding Cabinet	Cabinet	\$200 / Cabinet
KS	ENERGY STAR® Steamer	Steamer	\$200 / Steamer

DEMAND CONTROL KITCHEN HOOD

Measure Description: Commercial kitchen hoods can be equipped with demand control ventilation so that they are only running when they are needed. They use sensors and variable speed controls to vary the speed of the fans to meet the needs of the kitchen at any given time. This saves energy over constant speed kitchen hoods.

Applicability: New construction and retrofit installations

Equipment Eligibility: The kitchen hood must be able to automatically adjust the fan controls based on the need for ventilation.

Items to submit with Customer Rebate Application:

1. Dated sales receipt or paid invoice including materials and labor, as applicable
2. Manufacturer's specification sheets demonstrating compliance with equipment eligibility requirements

Instructions for Customer Rebate Application: On the Customer Rebate Application, mark the "Equipment Code" as "DCKH" the "Efficiency" as "NA"

Measure Rebate: Rebate amount for qualifying kitchen hoods is \$735.

The following is an example for a replacement of a cooler with one (1) 20-foot, high efficiency, low-temperature, reach-in cooler.

Parameter	Measure 1	Measure 2	Measure 3
Equipment code	APCF		
Project type (Retrofit or New Construction)	Retrofit		
Installation date	2/1/2025		
Facility Location (Distance from oceanfront)	1 mile		
Location of installed measure (e.g., roof, mechanical room)	Retail Area		
Equipment end use (e.g., supply fan, CHW pump)	Reach-in Cooler		
Age of replaced equipment (for retrofits)	30		
Replaced (existing) equipment Manufacturer	GE		
Replaced (existing) equipment Model number	123ABC452988GZ658		
New equipment Dealer name	Acme Cooler Install		
New equipment Manufacturer	Cooler Widgets		
New Equipment Model number	DEF456-1		
Annual operating hours	8,760		
Efficiency(ies) (as described in Equipment Catalog)	NA		
Measure size (as described in Equipment Catalog)	NA		
Measure rebate (\$) (e.g., HVAC: \$50/ton*10 tons=\$500)	\$70		
Number of measures	5		
Total rebate (\$) (# of Measures*Measure Rebate)	\$350		

2025 Santee Cooper Commercial Prescriptive Rebate Program

Domestic Hot Water Equipment Catalog

DOMESTIC HOT WATER MEASURES

This Domestic Hot Water (DHW) Equipment Catalog describes the eligibility requirements and rebate amounts for qualifying DHW measures and equipment under Santee Cooper’s Commercial Prescriptive Rebate Program (Rebate Program). It also includes instructions on how to complete the Customer Rebate Application and information regarding any required additional documentation. Please read the following sections carefully to ensure that you purchase and install qualifying equipment.

In order to be eligible for rebates through this Rebate Program, all equipment must meet the following requirements:

- Equipment and materials must be purchased, and all work initiated between December 1, 2024 and November 30, 2025, completion of work and Customer Rebate Applications must be finalized by November 30, 2025.
- Qualifying equipment and materials must be new.
- Qualifying measures must be completed in a manner that meets or exceeds all applicable code and regulatory requirements.
- The equipment that is removed and replaced with more energy-efficient equipment cannot be re-installed elsewhere and must be disposed of in accordance with all applicable local, state, and federal codes and regulations.
- Measure may be installed in either retrofit or new construction/major renovation applications subject to limitations pertaining to each measure listed in this catalog section.

Pre-qualification of DHW eligible measures under this Rebate Program is not required. Additional eligibility and submittal requirements for DHW technologies are outlined in this Equipment Catalog.

RESIDENTIAL STYLE WATER HEATERS

Measure Description: Modern water heaters are more energy efficient than their standard counterparts. Heat pump water heaters use electricity to move heat from one place to another instead of generating heat directly. Solar water heaters use renewable solar energy to heat the water.

Applicability: New construction and retrofit installations

Equipment Eligibility: Eligibility requirements are listed in Table D-1 below.

Items to submit with Customer Rebate Application:

1. Dated sales receipt or paid invoice including materials and labor as applicable
2. Manufacturer’s specification sheets demonstrating compliance with equipment eligibility requirements

Instructions for Customer Rebate Application: On the Customer Rebate Application, mark the “Efficiency” as the Energy Factor (EF).

Measure Rebate: Rebate amount for qualifying measures is listed below in Table D-1.

Table D-1: Residential Style Water Heater Rebate and Eligibility Requirements

Equipment Code	Measure Description	Eligibility Requirements	Unit	Rebate
HPWH	Heat Pump Water Heater	Energy Factor ≥ 2.0	Water Heater	\$350 / Unit
SOWH	Solar Water Heater	Solar; Energy Factor ≥ 1.84	Water Heater	\$500 / Unit

DRAIN WATER HEAT RECOVERY

Measure Description: Drain water heat recovery works by recovering heat from hot water that has been used and sent down the drain. This water then travels to a heat exchanger where it is used to pre-heat the water going into the hot water heater.

Applicability: New construction and retrofit installations

Equipment Eligibility: Must be able to retrofit an existing water heater to allow for drain water heat recovery.

Items to submit with Customer Rebate Application:

1. Dated sales receipt or paid invoice including materials and labor as applicable
2. Manufacturer's specification sheets demonstrating compliance with equipment eligibility requirements

Instructions for Customer Rebate Application: On the Customer Rebate Application, mark the "Equipment Code" as "DWHR" and the "Efficiency" as "N/A".

Measure Rebate: Rebate amount for the Drain Water Heat Recovery System is located in Table D-2.

Table D-2: Drain Water Heat Recovery System Rebate Amount

Measure	Incentive
Qualifying Drain Water Heat Recovery System	\$400 / Drain

AERATORS AND PIPE INSULATION

Measure Description: Faucet and shower aerators save electricity by using less hot water for activities such as hand washing, showering, and rinsing dishes. Pipe insulation helps to use less electricity by retaining the heat between the water heater and point of use, so the water heater doesn't have to work as hard.

Applicability: New construction and retrofit installations

Equipment Eligibility: Old aerators must be over 2.0 GPM. New equipment eligibility is listed below in Table D-3

Items to submit with Customer Rebate Application:

1. Dated sales receipt or paid invoice including materials and labor as applicable
2. Manufacturer's specification sheets demonstrating compliance with equipment eligibility requirements

Instructions for Customer Rebate Application: On the Customer Rebate Application, mark the "Efficiency" as the GPM for the aerators and the thickness for the insulation.

Measure Rebate: Rebate amount for qualifying measures is listed below in Table D-3.

Table D-3: Aerators and Pipe Insulation Rebate and Eligibility Requirements

Equipment Code	Measure Description	Measure Eligibility	Unit	Rebate
A15GPM	1.5 GPM Faucet Aerator	1.5 GPM or less	Aerator	\$3 / Aerator
S17GPM	1.75 GPM Showerhead	1.75 GPM or less	Showerhead	\$3 / Showerhead
HWPI	Pipe Insulation	Minimum of R-4	Linear Foot	\$3 / Linear Foot

2025 Santee Cooper Commercial Prescriptive Rebate Program Pumps/Motors Equipment Catalog

PUMPS / MOTORS MEASURES

In order to be eligible for rebates below through this Rebate Program, all work and equipment must meet the following requirements:

- Equipment and materials must be purchased, and all work initiated between December 1, 2024 and November 30, 2025, complete of work and Customer Rebate Applications must be finalized by November 30, 2025.
- Qualifying equipment and materials must be new.
- Qualifying measures must be completed in a workmanlike manner that meets or exceeds all applicable code and regulatory requirements.

Rebates for additional efficiency measures may be available. For more information about Santee Cooper rebates, eligibility requirements, rebate levels, other Santee Cooper energy efficiency programs, or general inquiries, visit the program's website at www.empowerSCbusiness.com, email us at commercial.energy@santeecooper.com, or contact Santee Cooper at (843)347-3399 ext. 3910 (Horry and Georgetown Counties) or (843)761-8000 ext. 3910 (Berkeley County).

VARIABLE SPEED WATER FEATURE PUMPS

Measure Description: Commercial water features, such as pools, fountains, waterfalls, etc., are required to have one or more pumps that filter and move the water. The “turn-over” rate for these pumps can be much lower during hours that the pool or water feature is not open. Variable speed pool pumps and motors can be slowed down to accommodate lower turn-over rates during times when the pool or water feature is closed or has less activity.

Applicability: New construction and retrofit installations

Equipment Eligibility:

- Used or refurbished Variable Speed Pumps are not eligible for this rebate.
- All work and equipment must meet the requirements of Pumps/Motors Measures above to be eligible for rebates through this Rebate Program.

Items to submit with Customer Rebate Application:

1. Dated sales receipt or paid invoice including materials and labor as applicable

Instructions for Customer Rebate Application: In the Customer Rebate Application, mark the “Efficiency” as “NA” and the “Measure Size” as the nameplate motor size of the removed pump motor.

Measure Rebate: Rebate amount for qualifying measures is listed below in Table PM-1

Table PM-1: Variable Speed Pool Filter Pump Rebates

Equipment Type	Size Category	Equip. Code	Rebate
Pool Filter Pump VFD	1-5 HP	PVFD	\$300 / HP
Non-Filtered Pool Pump VFD	Any HP	NPVFD	\$450

VARIABLE FREQUENCY DRIVE (SET AT CONSTANT REDUCED SPEED)

Measure Description: A variable frequency drive (VFD) may be used to reduce the speed of a pump on commercial water features, such as lazy rivers, pools, fountains, waterfalls, etc. The Prescriptive Program allows deemed savings for VFDs that are essentially set at a constant reduced speed from normal operation.

Applicability: Retrofit installations

Equipment Eligibility:

- Used or refurbished VFDs are not eligible for this rebate.
- Retrofit replacements only; no New Construction projects.
- All work and equipment must meet the requirements of Pumps/Motors Measures above to be eligible for rebates through this Rebate Program.
- VFD must be capable of being locked at reduced speed setting either physically or by use of a password.

Items to submit with Customer Rebate Application:

1. Dated sales receipt or paid invoice including materials and labor as applicable

Instructions for Customer Rebate Application: In the Customer Rebate Application, mark the “Efficiency” as “NA” and the “Measure Size” as the nameplate motor size of the of the pump motor on which the VFD is installed.

Measure Rebate: Rebate amount for qualifying measures is listed below in Table PM-2

Table PM-2: Variable Frequency Drive (set at constant reduced speed) Rebates

Equipment Type	Equip. Code	Rebate (\$/HP)
VariableFrequency Drive (constant setting)	CVFD	\$250

DOMESTIC WATER BOOSTER PUMP WITH VARIABLE SPEED DRIVE

Measure Description: Domestic water booster pumps are used in high-rise buildings to ensure the higher floors have adequate water pressure. Installing booster pumps with VFDs allows the pumps to slow down during periods when less water is required, like overnight.

Applicability: Retrofit installations

Equipment Eligibility:

- VFD controls must be installed as a complete system to include motors and pumps designed for variable speed operation. Installation of VFD Controls on a system originally designed for single speed operation will not be allowed.
- Used or refurbished pumps and/or motors are not eligible for this rebate.
- Retrofit replacements only; no New Construction projects.
- All work and equipment must meet the requirements of Pumps/Motors Measures above to be eligible for rebates through this Rebate Program.

Items to submit with Customer Rebate Application:

- Dated sales receipt or paid invoice including materials and labor as applicable
- Specification sheet for the pump/VFD

Instructions for Customer Rebate Application: In the Customer Rebate Application, mark the “Efficiency” as the efficiency of the new pump and the “Measure Size” as the nameplate motor size of the of the pump motor.

Measure Rebate: Rebate amount for qualifying measures is listed below in Table PM-2

Table PM-3: Domestic Water Booster Pump with VFD Rebates

Equipment Type	Equip. Code	Rebate (\$/HP)
Domestic Water Booster Pump with VFD	BPVFD	\$50

SAMPLE REBATE WORKSHEET

The following are examples of adding VFD to water pump measures.

Parameter	Measure 1	Measure 1	Measure 3	Measure 4
Equipment code	CVFD	PVFD	NPVFD	BPVFD
Project type (Retrofit or New Construction)	Retrofit	Retrofit	Retrofit	Retrofit
Installation date	5/1/2025	5/1/2025	5/1/2025	5/1/2025
Facility Location (Distance from oceanfront)	1 mile	1 mile	1 mile	1 mile
Location of installed measure (e.g., roof, mechanical)	Mechanical room	Mechanical room	Mechanical room	Mechanical room
EE Measure end use (e.g., supply fan, CHW pump)	Lazy river pump	Pool filter pump	Non-filtered Pool pump	Domestic Water Booster Pump
Age of replaced equipment (for retrofits)	Enter if applicable	Enter if applicable	Enter if applicable	Enter if applicable
Replaced (existing) equipment Manufacturer	Pentair	Pentair	Pentair	Pentair
Replaced (existing) equipment Model number	EQK1000	EQK1000	EQK1000	EQK1000
New equipment Dealer name	Pumps R Us	Pumps R Us	Pumps R Us	Pumps R Us
New equipment Manufacturer	Acme	Acme	Acme	Acme
New Equipment Model number	BR-549	BR-549	BR-549	BR-549
Annual operating hours	Annual VFD run hours	Annual VFD run hours	Annual VFD run hours	Annual VFD run hours
Efficiency(ies) (as described in Equipment Catalog)	NA	NA	NA	NA
Measure size (as described in Equipment Catalog)	Nameplate motor size of the installed VFD	Nameplate motor size of the installed VFD pump	NA	Nameplate motor size of the installed VFD pump
Measure rebate (\$) (e.g. HVAC: \$50/ton*10 tons=\$500)	15 HP x \$250 = \$3750	3 HP x \$300 = \$900	\$450 = \$450	3 HP x \$50 = \$150
Number of measures	2	2	2	2
Total rebate (\$) (# of Measures*Measure Rebate)	\$7500	\$900	\$900	\$300

2025 Santee Cooper Commercial Prescriptive Rebate Program

Smart Thermostat Equipment Catalog

SMART THERMOSTAT MEASURES

In order to be eligible for rebates below through this Rebate Program, all work and equipment must meet the following requirements:

- Equipment and materials must be purchased, and all work initiated between December 1, 2024, and November 30, 2025, complete of work and Customer Rebate Applications must be finalized by November 30, 2025.
- Qualifying equipment and materials must be new.
- Qualifying measures must be completed in a workmanlike manner that meets or exceeds all applicable code and regulatory requirements.

Rebates for additional efficiency measures may be available. For more information about Santee Cooper rebates, eligibility requirements, rebate levels, other Santee Cooper energy efficiency programs, or general inquiries, visit the program's website at www.empowerSCbusiness.com, email us at commercial.energy@santeecooper.com, or contact Santee Cooper at (843)347-3399 ext. 3910 (Horry and Georgetown Counties) or (843)761-8000 ext. 3910 (Berkeley County).

SMART THERMOSTAT

Measure Description: Smart Thermostats use advanced technology to iteratively learn the occupancy patterns and monitor the energy use of a building while optimizing your comfort and reducing energy use. Many Smart Thermostats conveniently connect to your smart phone, tablet, or computer through Wi-Fi to enable control of your building's temperature from anywhere Wi-Fi is available.

Applicability: Retrofit installations

Equipment Eligibility:

- Must be listed on the Prequalified Smart Thermostats List found on the Smart Thermostat Installation Form or online at www.santeecooper.com/thermostats
- Retrofit replacements only, no New Construction projects.
- Must be a new Smart Thermostat

Items to submit for rebate:

1. Completed Smart Thermostat Installation Form
2. Picture(s) of installed Smart Thermostat(s)
3. Dated sales receipt or paid invoice including materials and labor as applicable

Instructions for Customer Rebate Application: In the Customer Rebate Application, mark the "Efficiency" as "NA" and the "Measure Size" as NA.

Measure Rebate: Rebate amount for qualifying measures is listed below in Table T-1

Table T-1: Smart Thermostat Rebate

Equipment Type	Equip. Code	Rebate (\$/Device)
Smart Thermostat	ST	\$50

Is my facility eligible for this Program?

The facility is eligible for the Program if it is served by Santee Cooper under one of the following commercial rate schedules: GA, GB, GV, GT, GL, and TP. New construction and retrofit projects are eligible for the majority of rebates, as listed on page 4 of this manual. Specific eligibility questions should be directed to Santee Cooper by phone (843)347-3399 ext. 3910 (Horry and Georgetown Counties), (843)761-8000 ext. 3910 (Be...

When will I receive my rebate from Santee Cooper?

After an eligible measure is installed and the completed Customer Rebate Application (for all measures except lighting measures) or final documentation (for lighting measures) is received, you will receive your rebate subject to final inspection.

What if I am installing a measure in a leased property and my tenant is responsible for the

Eligibility is determined based on the information on the electric account for the building where the equipment is installed. Rebates will be paid to the name and address on the electric account.

How long will this program be available?

The 2025 Rebate Program is available between December 1, 2024 and November 30, 2025. Equipment and materials must be purchased, all work initiated and completed, and final Customer Rebate Application submitted prior to November 30, 2025.

Santee Cooper anticipates the Rebate Program to be an integral part of its future resource plan moving forward but reserves the right to cancel or modify the Program at any time.

Where can I find out more about this Program?

Customers can learn more about the Rebate Program and other Santee Cooper programs in the following ways:

- **Website:** www.empowerSCbusiness.com
- **Trade Ally Portal:** www.empowerSC4business.com
- **Email:** commercial.energy@santeecooper.com
- **Phone:** (843)347-3399 ext. 3910 (Horry and Georgetown Counties)
and (843)761-8000 ext. 3910 (Berkeley County)

The following customer forms are included:

- Terms and Conditions
- Customer Rebate Application
- Rebate Worksheet
- Smart Thermostat Installation Form

2025 Commercial Rebate Programs Terms and Conditions

Santee Cooper is implementing the Commercial Rebate Program to provide customers with rebates to facilitate the installation of qualifying energy-efficient measures. The following terms and conditions apply to the program:

Eligibility To participate in the applicable Santee Cooper Commercial Rebate Program (the “Rebate Program”), Participant must comply with the eligibility requirements and program participation requirements as set forth in the Program Manual for the Rebate Program provided with these Terms and Conditions.

Other Conditions No agreement or understanding to modify the terms and conditions of this Rebate Program shall be binding upon Santee Cooper unless in writing and signed by Santee Cooper’s authorized agent. Notwithstanding the foregoing, the terms of the Rebate program are subject to change or modification by Santee Cooper with or without notice at any time. Santee Cooper reserves the right to discontinue the Rebate Program without notice.

Rebate Program payments will be in the form of a check and made out to the Participant or its designee. Rebates will be processed approximately 45 days after Santee Cooper or its agent’s timely receipt of a completed rebate form along with proof of sale. Incomplete or inaccurate applications are subject to delay or denial of Rebate. Santee Cooper reserves the right to make final determination in its sole discretion of Rebate Program eligibility and amount of rebate. Should Participant fail to provide a valid taxpayer identification number, any payment provided under the Rebate Program will be subject to withholding pursuant to federal regulations.

All materials issued to the Applicant by Santee Cooper as information pertaining to this Rebate Program, including but not limited to, the Program Manual and appendices thereto (collectively the “Program Manual”), shall be deemed included in these terms and conditions as if set forth verbatim herein. To the extent there is any conflict between the language of the Program Manual and terms set forth herein, the terms set forth herein shall prevail.

Indemnification Participant will indemnify and hold harmless Santee Cooper and its affiliates, subsidiaries, joint ventures, officers, directors, employees, agents (including its program administrator Resource Innovations, Inc. (“Resource Innovations”)), successors, and assigns (collectively the “Indemnified Parties”) from and against all liability claims and demands, including any damages, losses, liabilities or expenses (including without limitation court costs and reasonable attorneys’ fees) which arise as a result of the Participant’s action or inaction which relates in any way to this Rebate Program, including the submission of fraudulent rebates. Notwithstanding the foregoing, this indemnification is in addition to any indemnity and/or insurance obligations between the Participant and the Indemnified Parties.

IN NO EVENT SHALL THE INDEMNIFIED PARTIES BE LIABLE TO PARTICIPANT FOR ANY CONSEQUENTIAL, INCIDENTAL, PUNITIVE, OR DIRECT DAMAGES, INCLUDING LOST PROFITS, ARISING FROM OR OTHERWISE IN CONNECTION WITH THIS REBATE PROGRAM.

No Warranties SANTEE COOPER AND RESOURCE INNOVATIONS MAKE NO REPRESENTATIONS, WARRANTIES, OR GUARANTEES OF ANY KIND WITH RESPECT TO THE QUALITY, DESIGN, MANUFACTURE, CONSTRUCTION, SAFETY, PERFORMANCE, INSTALLATION, OR EFFECTIVENESS OF EQUIPMENT CONNECTED TO THE REBATE PROGRAM. SANTEE COOPER AND RESOURCE INNOVATIONS DISCLAIM ALL WARRANTIES, EXPRESSED OR IMPLIED, INCLUDING WITHOUT LIMITATION, THE IMPLIED WARRANTIES OF MERCHANTABILITY, FITNESS FOR A PARTICULAR PURPOSE, USE OR APPLICATION AND NON-INFRINGEMENT WITH RESPECT TO THE EQUIPMENT.

Responsibility for delivery and workmanship related to any materials or equipment that participant procures under the rebate program exclusively rests with participant or other third party. NEITHER SANTEE COOPER NOR RESOURCE INNOVATIONS ASSUMES ANY RESPONSIBILITY FOR THE REPRESENTATIONS, WARRANTIES OR GUARANTEES WITH RESPECT TO THE QUALITY, DESIGN, MANUFACTURE, CONSTRUCTION, SAFETY, PERFORMANCE, INSTALLATION, OR EFFECTIVENESS OF THE EQUIPMENT OR OVERSIGHT OF CONTRACTOR SERVICES UTILIZED BY PARTICIPANT. Neither Santee Cooper, nor Resource Innovations, guarantees that installation and operation of the equipment will result in reduced energy usage or cost savings.

Representations and Warranties Participant represents, warrants, and covenants that it has and/or shall undertake all of its duties, and those matters incident thereto, under this rebate program in a good and workmanlike manner, and in a manner that will fully comply with all applicable local, state, and federal laws and regulations; and, that it is legally authorized by license or otherwise, insofar as such authorization is required, to perform all duties required by it under this rebate program, and that its participation in this rebate program will not result in the breach of any contract to which it is a party.

Neither Santee Cooper nor Resource Innovations is responsible for any tax liability which may be imposed on the Participant as a result of any rebate payment. Participant may be responsible for the tax reporting to the IRS of any rebate payments directed to third parties. Neither Santee Cooper nor Resource Innovations is providing tax advice, and any communications to such parties is not intended to be used, and cannot be used, for the purpose of avoiding penalties under the Internal Revenue Code.

Participant agrees that Santee Cooper shall have the right, upon written notice to Participant, to examine all records and data of Participant pertaining to its participation in the Rebate Program.

The laws of the State of South Carolina shall govern the interpretation, validity, and effect of these Terms and Conditions, the parties' performance thereunder, and all matters incident thereto.

By signing below, applicant acknowledges and agrees that:

- I have read and understand all Terms and Conditions, participation procedures, customer eligibility, and measure qualifications in the Program Manual for Santee Cooper's 2022 Commercial Rebate Program being applied for. I have also read and understand all Terms and Conditions in this form.
- I certify as the building owner or the owner's authorized representative that all the information contained within submitted applications is true and factual.
- The undersigned applicant shall defend, protect, indemnify and hold harmless Santee Cooper and its board members, officers, employees, servants, and agents (the "Indemnified Parties") against all claims, losses, expenses, damages, demands, judgments, causes of action, suits, and liability of every kind and character whatsoever ("claims") arising out of or incident to, or related in any way to, directly or indirectly, participation in the Commercial Rebate Program; provided however, that applicant shall not be required to indemnify and hold harmless any Indemnified Party against claims adjudicated to have been caused by the Indemnified Party's gross negligence or willful misconduct.
- The federal government may require that a 1099 be issued to you, the customer, for the rebate amount paid to you or your contractor. Please consult with your tax professional for tax implications.

Business Classification (Must Check One Only, required for all businesses, including non-profits):

☐ Corporation ☐ Partnership ☐ Sole Proprietor/Individual ☐ LLC ☐ Non-Profit ☐ Other _____

Business Name: _____

Federal Tax ID # (9 digits): _____ Date _____

Signature: _____

Name (please print): _____

Title: _____

Send form to: Email: www.empowerSCbusiness.com

Mail: Santee Cooper Energy Support Services
305-A Gardner Lacy Road
Myrtle Beach, SC 29579

Please enter in email subject line – **SECURE: Terms and Conditions**

2025 Santee Cooper Commercial Prescriptive Rebate Program Customer Rebate Application



Customer Rebate Application Instructions

This Customer Rebate Application is required for participation in the Commercial Prescriptive Rebate Program (Rebate Program) for projects installing qualifying non-lighting measures. The Lighting Workbook required for lighting projects is available online at www.empowerSCbusiness.com. Complete participation information and eligibility specifications are included in the 2025 Commercial Prescriptive Rebate Program Manual, also available at www.empowerSCbusiness.com.

This Customer Rebate Application packet contains the following parts:

- General Information
- Rebate Payment Information
- Rebate Worksheet

To participate in this Rebate Program, please follow the following steps:

1. Read the 2025 Program Manual for a complete description of program eligibility requirements and the participation process.
2. Read the Terms and Conditions document and sign.
 - Signing the Terms and Conditions document accepts the terms and conditions of this Rebate Program.
3. Purchase and install qualifying equipment and/or initiate and complete work between December 1, 2024 and November 30, 2025.
4. Complete the following forms included with this Customer Rebate Application:
 - **General Information** – Include all required customer and account information.
 - **Rebate Payment Information** – Rebates will be mailed to customer's electric account billing address. If customer would prefer for the check to be designated to someone other than the customer, complete the Payment Release Information on page three of this Customer Rebate Application.
 - **Rebate Worksheet** – Include all required product information including: product type, install date, dealer name, manufacturer, model number(s), efficiency, size, quantity, and rebate amount. Dealers or contractors may assist with the completion of the rebate worksheet.
5. Complete any required supplemental forms for the energy efficiency measures being installed, if applicable.
6. Submit a current W9 form for the customer applying for the rebate.
7. Retain a copy of all completed Customer Rebate Application forms and all required documentation, such as invoices and contracts. Submitted Customer Rebate Applications will become the property of Santee Cooper.

Submit the completed forms and required documentation, including dated sales receipt or invoice, by November 30, 2025 to:

Santee Cooper Energy Services
305-A Gardner Lacy Road
Myrtle Beach, SC 29579

Email: commercial.energy@santeecooper.com

Please enter in email subject line – SECURE: Rebate Application

For More Information. For more information about this Rebate Program, measure eligibility, rebates, or other Santee Cooper programs please contact us:

- **Website:** www.empowerSCbusiness.com
- **Trade Ally Portal:** www.empowerSC4business.com
- **Email:** commercial.energy@santeecooper.com
- **Phone:** (843)347-3399 ext. 3910 (Horry and Georgetown Counties)
and (843)761-8000 ext. 3910 (Berkeley County)

General Information

Important: This form is not for lighting projects. For lighting projects, please use the Lighting Workbook. (Note: Retrofit lighting projects **REQUIRE** pre-inspection before work can be started.)

Energy efficiency measures must be purchased, installed, and/or completed at a qualifying customer facility prior to submitting the Customer Rebate Application unless otherwise noted in the Equipment Catalog. Please allow 6 weeks for the Customer Rebate Application and rebate processing following complete documentation submittal and post-installation inspection procedures. Rebates will not be paid for ineligible or incomplete Customer Rebate Applications.

Business Name (as it appears on Santee Cooper Bill) _____ Federal Tax ID (EIN) or Social Security # _____

Santee Cooper Account Number(s) where measure(s) to be installed (location on Santee Cooper Bill) _____

Santee Cooper Meter Number(s) where measure(s) to be installed (location on Santee Cooper Bill) _____

Address where measure(s) to be installed _____ City _____ State _____ Zip _____

Contact Name _____ Contact Phone Number _____ Contact Email Address _____

Electronic Account Billing Address (if different from the installation address) _____ City _____ State _____ Zip _____

Is Contractor a Santee Cooper Trade Ally? ☐ Yes ☐ No
Contractor Name _____

Building Information

Primary building use:

- | | | |
|--|--|--|
| <input type="checkbox"/> Automotive Facility | <input type="checkbox"/> Hotel | <input type="checkbox"/> Police/Fire Station |
| <input type="checkbox"/> Convention Center | <input type="checkbox"/> Library | <input type="checkbox"/> Post Office |
| <input type="checkbox"/> Court House | <input type="checkbox"/> Manufacturing Facility | <input type="checkbox"/> Religious Building |
| <input type="checkbox"/> Dining: Bar Lounge/Leisure | <input type="checkbox"/> Motel | <input type="checkbox"/> Retail |
| <input type="checkbox"/> Dining: Cafeteria/Fast Food | <input type="checkbox"/> Motion Picture Theater | <input type="checkbox"/> School/University |
| <input type="checkbox"/> Dining: Family | <input type="checkbox"/> Multi-Family Housing | <input type="checkbox"/> Sports Arena |
| <input type="checkbox"/> Dormitory | <input type="checkbox"/> Museum | <input type="checkbox"/> Town Hall |
| <input type="checkbox"/> Exercise Center | <input type="checkbox"/> Office | <input type="checkbox"/> Transportation |
| <input type="checkbox"/> Gymnasium | <input type="checkbox"/> Parking Garage | <input type="checkbox"/> Warehouse |
| <input type="checkbox"/> Health Care - Clinic | <input type="checkbox"/> Penitentiary | <input type="checkbox"/> Workshop |
| <input type="checkbox"/> Hospital | <input type="checkbox"/> Performing Arts Theater | <input type="checkbox"/> Other _____ |

Building Size: _____

Number of Floors: _____

Year Built: _____

Percent Conditioned: _____

Operating Hours: _____

Temperature Set-points:

	Heating	Cooling
Occupied	_____ °F	_____ °F
Un-occupied	_____ °F	_____ °F

Rebate Payment Information

Mail rebate check to: ☐ Billing Address ☐ Other (complete release below)

Rebate check reference (15 character maximum)

3rd Party Release (Payment Release Information)

Important: Complete this section only if rebate payment is to be directed to someone other than the customer indicated above. Please note that the federal government may require that a 1099 be issued to you, the customer, for the rebate amount paid to your contractor. Please consult with your tax professional for tax implications.

I AM AUTHORIZING THIS REBATE PAYMENT TO THE THIRD PARTY NAMED BELOW AND I UNDERSTAND THAT I WILL NOT BE RECEIVING THE REBATE PAYMENT CHECK FROM SANTEE COOPER. I ALSO UNDERSTAND THAT MY RELEASE OF PAYMENT TO THE THIRD PARTY DOES NOT EXEMPT ME FROM THE REBATE REQUIREMENTS OUTLINED IN THE APPLICATION.

Authorized by (please print)

Signature of Authorized

Date

Check should be made payable to:

Payee Business Name

Contact Phone Number

Payee Federal Tax ID (EIN) or Social Security Number

Payee Mailing Address

City

State

Zip

Rebate Worksheet

Important: This form is to be completed and submitted to Santee Cooper with the Customer Rebate Application. Please refer to the Equipment Catalog(s) for measure eligibility requirements, rebate amounts and codes. Dealers or contractors may assist in the completion of this form. Attach additional sheets as necessary.

Parameter	Measure 1	Measure 2	Measure 3
Equipment code			
Project type (Retrofit or New Construction)			
Installation date			
Facility Location (Distance from oceanfront)			
Location of installed measure (e.g. roof, mechanical room)			
EE Measure end use (e.g. supply fan, CHW pump)			
Age of replaced equipment (for retrofits)			
Replaced (existing) equipment Manufacturer			
Replaced (existing) equipment Model number			
New equipment Dealer name			
New equipment Manufacturer			
New Equipment Model number			
Annual operating hours ¹			
Efficiency(ies) (as described in Equipment Catalog)			
EE Measure size (as described in Equipment Catalog)			
EE Measure rebate (\$) (e.g. HVAC: \$50/ton*10 tons=\$500)			
Number of measures			
Total rebate (\$) (# of Measures*Measure Rebate)			

¹IF VFD application, please specify the equipment schedule(s)

Customer Rebate Application Checklist

Before submitting this Customer Rebate Application please verify the following:

1. Did you read and understand the eligibility requirements in the Equipment Catalog?
2. Have you included a dated sales invoice?
3. Did you attach any additional documentation listed in the Equipment Catalog?
4. Did you include your account number?
5. Did you sign the Terms and Conditions Form?

SEND COMPLETED CUSTOMER REBATE APPLICATIONS TO:

Mail: Santee Cooper Energy Services
305-A Gardner Lacy Road
Myrtle Beach, SC 29579

Email: commercial.energy@santeeecooper.com

Please enter in email subject line – SECURE: Rebate Application

2025 Commercial Prescriptive Program

Commercial Smart Thermostat Installation Form

Instructions:

1. Santee Cooper is offering a \$50 rebate for prequalified smart thermostats to eligible commercial customers.
 - Smart Thermostats must match device name and model number per Table 1-1 (see page 2).
2. Smart Thermostats must be new. Rebate payments are limited to the price of the smart thermostat.
3. Smart Thermostat rebates are for retrofit replacements only - no new construction projects.
4. Who installed the Smart Thermostat?
☐ Self-Install
☐ Contractor Name
5. Rebate processing is contingent upon receipt and final review of this form and the following required materials:
 - Proof of purchase
 - Picture(s) of installed eligible device(s)
 - Current W9 form for the customer applying for the rebate
6. All required documentation must be submitted no later than **November 30, 2025** Reference the Program Manual for details.

Step 1 - Customer Information

<div></div>		<div></div>	
Customer/Business Name		Last 4 digits of FID Number	
<div></div>	<div></div>	<div></div>	<div></div>
Street Address	City	State	Zip
<div></div>	<div></div>	<div></div>	
Electric Meter Number ¹ /Meter Base#	Business Phone Number	Email	

¹Electric Meter Number can be found on the customer's electric bill.

Step 2 - Required Documentation

Complete the following sections based on the equipment installed. Failure to provide complete information will delay rebate payment.

Smart Thermostat Information					
Brand	Model Number	Number of Thermostats in the Building	Number of Thermostats Installed		
<div></div>	<div></div>	<div></div>	<div></div>		

Building Information					
Building Square Footage	Year Built	Number of Years Occupied by Current Owner	Number of Heat Pumps in the Building	Estimated System Install Date	Heat Pump Size (Tons)
<div></div>	<div></div>	<div></div>	<div></div>	<div></div>	<div></div>

Step 3 - Customer Signature

I hereby certify that the Smart Thermostat(s) has been installed at the address provided herein in accordance with the Commercial Prescriptive Program requirements; and the information provided in this form is accurate and complete. I understand that Santee Cooper requires this form to be fully completed and all required documentation submitted in order to process rebate requests.

<div></div>	<div></div>	<div></div>
Customer Signature	Customer Printed Name	Date

Commercial Smart Thermostat Installation Form

Table 1-1 Santee Cooper Prequalified Smart Thermostat List – V1.2025 – DEC2024

Please check the Santee Cooper website at www.santeecooper.com/thermostats to see the most up-to-date prequalified smart thermostat list.

Manufacturer	Thermostat	Model Number
Amazon	Amazon Smart Thermostat	S6ED3R
Bryant	Ecobee for Bryant Smart Thermostat Premium	EB-STATE6IBR-01
Carrier	Ecobee for Carrier Smart Thermostat Premium	EB-STATE6ICR-01
Cielo	Cielo Breez Eco Cielo Breez Plus	Cielo Breez Eco Cielo Breez Plus
Ecobee	Ecobee 3 Lite with Separate Motion Sensors	SG_B07K2GTKQ5_US EB-STATE3LTVP-01
	Ecobee3 Lite Pro	EB-STATE3LTBR-01 EB-STATE3LTCR-01
	Ecobee 4	EB-STATE4-01
	Ecobee Premium	Premium
	Ecobee Enhanced	Enhanced
Emerson	SmartThermostat with Voice Control	EB-STATE5-01
	Sensi Touch	ST75 ST75S ST75U ST75W 1F95U-42WF 1F95U-42WFB 1F95U-42WFS
	Sensi Touch 2	ST76 ST76U ST76W 1F96U-42WF 1F96U-42WFB
	Sensi Lite Smart	ST25 ST25U 1F76U-22WFB
	Sensi™ Smart Thermostat	ST55 1F87U-42WF
Greenlite	Airz Greenlite G2	Airz G2
Hive	Hive Heating and Cooling Smart Thermostat Pack, Thermostat + Hive Hub	
Honeywell	The Round Smart Thermostat-2 nd Generation	RCH9310WF
	T5 Smart Thermostat	RTH8800WF2022/U
	T6 Pro Smart Thermostat Multi-Stage 2 Heat/2 Cool	TH6220WF2006/U
	T6 Pro Smart Thermostat Multi-Stage 3 Heat/2 Cool	TH6320WF2003/U
	T9 (with or without sensor)	RCHT9610WFSW2003/U
Lennox	T10	THX321WF3003W/U THX321WFS3001W/U THX321WFS2001W/U THX321WF2003W/U
	iComfort E30 iComfort M30	ICOMFORT E30 ICOMFORT M30
Lux	Kono Smart Wi-Fi Thermostat	KN-S-MG1-B04
	CS1	CS1
	GEO	GEO (WH, BL)
Momentum	Meri Smart-Learning	MO-STAT01
Nest	Learning Thermostat	Any Model Number
the Simple	The Simple Thermostat	Simple S100 B
Sensibo	Sensibo Sky AC Controller	Sensibo Sky
	Sensibo Air Pro AC Controller	Sensibo Air Pro
	Sensibo Air AC Controller	Sensibo Air
Venstar Inc	Explorer Mini (residential)	T2100
	Explorer IAQ	T3950_IAQ
Wyze	Programmable Smart Wi-Fi Thermostat	Programmable Smart Wi-Fi Thermostat

Send Completed Form to:

Mail: Santee Cooper Energy Support Services
305A Gardner Lacy Road
Myrtle Beach, SC 29579
Email: commercial.energy@SanteeCooper.com
Please enter in email subject line – SECURE: Smart Thermostat

The following sample electric bill highlights the location of the customer account number and meter number to be included in the Customer Rebate Application, Lighting Workbook, and HVAC Calculator and Smart Thermostat Form:

677241626800000000000850667

SANTEE COOPER
PO BOX 188
MONCK'S CORNER, SC 29461-0188

Any Business
4321 Anywhere St
Anywhere Town SC 29585

ACCOUNT NUMBER
6772416268

PLEASE PAY BY
08/04/2021

AMOUNT DUE
\$850.66

AMOUNT PAID

Please make checks payable to **SANTEE COOPER**

Detach this stub and return with your payment. See back for payment options.

☐ Check here for **address change, comments.**
If you would like to sign up for **Autopay**,
Please write on the reverse side and return.

Bill Date: 07/20/2021
Any Business
4321 Anywhere St
Anywhere Town SC 29585

Previous balance	693.76
Payments received	-693.76
Electric Service Commercial	850.66
Total Charges	\$ 850.66

4321 Anywhere St, Anywhere Town, SC 29585

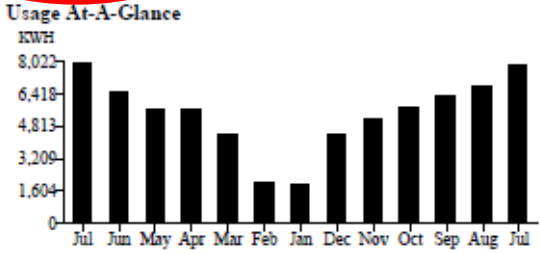
General Service Commercial from 6/18/21 through 7/20/21 for 33 days

Meter Number	Usage / Consumption
LO3E61457	8018 KWH

Electric Service Commercial - 06/18/21 to 07/20/21

Customer Charge	25.00
Energy Charge	902.83
Fuel Adjustment	-108.56
Demand Sales Adjustment	-16.76
Sales Tax	48.15
Total New Charges	\$850.66

Usage At-A-Glance



Month	Usage (KWH)
Jul	8,022
Jun	6,418
May	5,813
Apr	5,813
Mar	4,813
Feb	1,604
Jan	1,604
Dec	4,813
Nov	5,813
Oct	5,813
Sep	6,418
Aug	6,418
Jul	8,022

ACCA: Air Conditioning Contractors of America

AHRI: Air-Conditioning, Heating, and Refrigeration Institute

ANSI: American National Standards Institute

ARI: Air-Conditioning and Refrigeration Institute, which has become AHRI. ARI standards have been renamed as AHRI standards and compliance with AHRI standards is inclusive of ARI standards⁵.

ASHRAE: American Society of Heating, Refrigerating, and Air-Conditioning Engineers

Btu/h: British Thermal Units per Hour – energy that is produced or rejected from a system.

CEE: Consortium for Energy Efficiency

CFM: Cubic Feet per Minute – measurement of airflow.

COP: Coefficient of Performance – the ratio of heating or cooling to energy consumption, in consistent units.

CRI: Color Rendering Index – a measure of a lamp's ability to render colors accurately.

ECM: Electronically Commutated Motor – ultra high-efficiency programmable brushless DC motor.

EER: Energy-Efficiency Ratio – the ratio of net cooling capacity in Btu/h to total rate of electric input in watts.

Facility: For the purposes of Santee Cooper's energy-efficiency programs, a customer facility is defined as one or several contiguous or adjacent buildings owned or operated by a single customer.

Glazing: The glass portion of a window

HID: High Intensity Discharge – a general group of lamps consisting of mercury, metal halide, high pressure sodium, and low-pressure sodium lamps.

Hp: Horsepower – unit of power equal to 746 watts.

HSPF: Heating Seasonal Performance Factor – a single number figure of merit expressing the seasonal heating efficiency of heat pumps in Btu/Watt-hour. The term is generally applied to heat pump systems less than 65,000 Btu/h.

⁵ See <http://www.ahrinet.org/Pages/ShowMeMore.aspx?src=single&lpk=908> and <http://www.ashrae.org/publications/detail/16574> for press releases.

HVAC: Heating, Ventilation, and Air-Conditioning

IECC: International Energy Conservation Code

IEER: Integrated Energy-Efficiency Ratio – a single number figure of merit expressing cooling part-load EER efficiency for commercial unitary air-conditioning and heat pump equipment on the basis of weighted operation at various load capacities for the equipment. As of 1/1/10, IEER superseded IPLV for unitary HVAC equipment greater than or equal to 65,000 Btu/hour in ASHRAE standard 90.1-2007.

IPLV: Integrated Part Load Value – a single-number figure of merit based on part-load EER, COP, or kW/ton expressing part-load efficiency for air-conditioning and heat pump equipment on the basis of weighted operation at various load capacities for the equipment.

IECC: International Energy Conservation Code

IPLV: Integrated Part-Load Value – a single number figure of merit based expressing part-load efficiency for chillers on the basis of weighted operation at various load capacities.

lbs: Pounds

LED: Light-Emitting Diode

LEED: Leadership in Energy and Environmental Design – an internationally recognized green building certification system developed by the U.S. Green Building Council (USGBC).

PTAC: Packaged Terminal Air-Conditioner

PTHP: Packaged Terminal Heat Pump

R-value: A measure of thermal resistance used in the building and construction industry.

SEER: Seasonal Energy-Efficiency Ratio – the total cooling output of an air conditioner or heat pump during its normal annual usage period for cooling, in Btu, divided by the total electric energy input during the same period, in watt hours.

SF: Square Foot

SHGC: Solar Heat Gain Coefficient – a measurement of the amount of solar radiation through a piece of glass or door material.

T12, T8, T5: Types of fluorescent lamps.

UL: Underwriters Laboratories Inc

VAV: Variable Air Volume – a technique for controlling the capacity of a heating, ventilating, and/or air-conditioning (HVAC) system.

VFD: Variable Frequency Drive – a system for controlling the rotational speed of an alternating current electric motor by controlling the frequency of the electrical power supplied to the motor.

VRF: Variable Refrigerant Flow – a system equipped with a variable speed DC compressor that is powered through an inverter drive. This technology allows the compressor to vary speed so that it is only delivering the optimum amount of refrigerant to the system according to the cooling (or heating) load.

The commercial energy code used in South Carolina, effective January 1, 2014, is the International Energy Conservation Code (IECC) 2009. HVAC standards for IECC 2009 are based on ASHRAE Standard 90.1-2007. IECC 2009 was used for the efficiency requirements, where applicable. If the equipment is not within the IECC 2009 standard, IECC 2012 or ASHRAE 90.1-2010 were used for the values in the table below. **Note: Equipment must exceed baseline values in order to qualify.**

Equipment	BTUh (>=)	BTUh (<)	Baseline Efficiency			Baseline Reference
			EER	SEER	HSPF	
1 Phase Heat Pump Single Package	0	65,000	Not in Code	14	8	Code of Federal Regulations kW savings is calculated based on SEER & EFLH
1 Phase Heat Pump Split System	0	65,000	Not in Code	14	8.2	Code of Federal Regulations kW savings is calculated based on SEER & EFLH
3 Phase Heat Pump Single Package	0	65,000	Not in Code	13	7.7	IECC 2012 kW savings is calculated based on SEER & EFLH
3 Phase Heat Pump Split System	0	65,000	Not in Code	13	7.7	IECC 2012 kW savings is calculated based on SEER & EFLH
3 Phase Unitary AC Single Package	0	65,000	Not in Code	13	-	IECC 2012 kW savings is calculated based on SEER & EFLH
3 Phase Unitary AC Split System	0	65,000	Not in Code	13	-	IECC 2012 kW savings is calculated based on SEER & EFLH
VRF/Mini-Split AC	0	65,000	Not in Standard	13	-	ASHRAE 90.1-2010 kW savings is calculated based on SEER & EFLH
VRF/Mini-Split HP	0	65,000	Not in Standard	13	7.7	ASHRAE 90.1-2010 kW savings is calculated based on SEER & EFLH
Equipment	BTUh (>=)	BTUh (<)	EER	SEER	COP	Baseline Reference
PTAC (New Construction)	0	8,001	12.5-0.213cap/1000	Not in Code	NA	IECC 2009 kWh savings is calculated based on EER & EFLH
PTAC (New Construction)	8,001	10,501	12.5-0.213cap/1000	Not in Code	NA	IECC 2009 kWh savings is calculated based on EER & EFLH
PTAC (New Construction)	10,501	13,501	12.5-0.213cap/1000	Not in Code	NA	IECC 2009 kWh savings is calculated based on EER & EFLH
PTAC (New Construction)	13,501	1,000,000	12.5-0.213cap/1000	Not in Code	NA	IECC 2009 kWh savings is calculated based on EER & EFLH
PTAC (Retrofit)	0	8,001	10.9-0.213cap/1000	Not in Code	NA	IECC 2009 kWh savings is calculated based on EER & EFLH
PTAC (Retrofit)	8,001	10,501	10.9-0.213cap/1000	Not in Code	NA	IECC 2009 kWh savings is calculated based on EER & EFLH
PTAC (Retrofit)	10,501	13,501	10.9-0.213cap/1000	Not in Code	NA	IECC 2009 kWh savings is calculated based on EER & EFLH
PTAC (Retrofit)	13,501	1,000,000	10.9-0.213cap/1000	Not in Code	NA	IECC 2009 kWh savings is calculated based on EER & EFLH
PTHP (New Construction)	0	8,001	12.3-0.213cap/1000	Not in Code	3.2-0.026cap/1000	IECC 2009 kWh savings is calculated based on EER, COP, & EFLH
PTHP (New Construction)	8,001	10,501	12.3-0.213cap/1000	Not in Code	3.2-0.026cap/1000	IECC 2009 kWh savings is calculated based on EER, COP, & EFLH
PTHP (New Construction)	10,501	13,501	12.3-0.213cap/1000	Not in Code	3.2-0.026cap/1000	IECC 2009 kWh savings is calculated based on EER, COP, & EFLH
PTHP (New Construction)	13,501	1,000,000	12.3-0.213cap/1000	Not in Code	3.2-0.026cap/1000	IECC 2009 kWh savings is calculated based on EER, COP, & EFLH
PTHP (Retrofit)	0	8,001	10.8-0.213cap/1000	Not in Code	2.9-0.026cap/1000	IECC 2009 kWh savings is calculated based on EER, COP, & EFLH
PTHP (Retrofit)	8,001	10,501	10.8-0.213cap/1000	Not in Code	2.9-0.026cap/1000	IECC 2009 kWh savings is calculated based on EER, COP, & EFLH
PTHP (Retrofit)	10,501	13,501	10.8-0.213cap/1000	Not in Code	2.9-0.026cap/1000	IECC 2009 kWh savings is calculated based on EER, COP, & EFLH
PTHP (Retrofit)	13,501	1,000,000	10.8-0.213cap/1000	Not in Code	2.9-0.026cap/1000	IECC 2009 kWh savings is calculated based on EER, COP, & EFLH
Equipment	BTUh (>=)	BTUh (<)	EER	IEER	COP	Baseline Reference
3 Phase Unitary AC Single Package	65,000	135,000	11.2	11.4	NA	IECC 2012
3 Phase Unitary AC Single Package	135,000	240,000	11	11.2	NA	IECC 2012
3 Phase Unitary AC Single Package	240,000	760,000	10	10.1	NA	IECC 2012
3 Phase Unitary AC Single Package	760,000	1,000,000	9.7	9.8	NA	IECC 2012
3 Phase Unitary AC Split System	65,000	135,000	11.2	11.4	NA	IECC 2012
3 Phase Unitary AC Split System	135,000	240,000	11	11.2	NA	IECC 2012
3 Phase Unitary AC Split System	240,000	760,000	10	10.1	NA	IECC 2012
3 Phase Unitary AC Split System	760,000	1,000,000	9.7	9.8	NA	IECC 2012
3 Phase Heat Pump Single Package	65,000	135,000	11	11.2	3.3	IECC 2012
3 Phase Heat Pump Single Package	135,000	170,000	10.6	10.7	3.2	IECC 2012
3 Phase Heat Pump Single Package	170,000	240,000	10.6	10.7	3.2	IECC 2012
3 Phase Heat Pump Single Package	240,000	1,000,000	9.5	9.6	3.2	IECC 2012
3 Phase Heat Pump Split System	65,000	135,000	11	11.2	3.3	IECC 2012
3 Phase Heat Pump Split System	135,000	170,000	10.6	10.7	3.2	IECC 2012
3 Phase Heat Pump Split System	170,000	240,000	10.6	10.7	3.2	IECC 2012
3 Phase Heat Pump Split System	240,000	1,000,000	9.5	9.6	3.2	IECC 2012
VRF/Mini-Split AC	65,000	135,000	11.2	13.1	NA	ASHRAE 90.1-2010
VRF/Mini-Split AC	135,000	240,000	11	12.9	NA	ASHRAE 90.1-2010
VRF/Mini-Split AC	240,000	1,000,000	10	11.6	NA	ASHRAE 90.1-2010
VRF/Mini-Split HP	65,000	135,000	11	12.9	3.3	ASHRAE 90.1-2010
VRF/Mini-Split HP	135,000	240,000	10.6	12.3	3.2	ASHRAE 90.1-2010
VRF/Mini-Split HP W/ Heat Recovery	135,000	240,000	10.4	12.1	3.2	ASHRAE 90.1-2010
VRF/Mini-Split HP	240,000	1,000,000	9.5	11	3.2	ASHRAE 90.1-2010
VRF/Mini-Split HP W/ Heat Recovery	240,000	1,000,000	9.3	10.8	3.2	ASHRAE 90.1-2010

*Cap=Equipment capacity in BTUh

V1.2025 (12/01/2024)



Website: www.empowerSCbusiness.com

Trade Ally Portal: www.empowerSC4business.com

Email: commercial.energy@santeecooper.com

Phone: (843)347-3399 ext. 3910 (Horry and Georgetown Counties)
and (843)761-8000 ext. 3910 (Berkeley County)

Mail: Santee Cooper Energy Support Services
305-A Gardner Lacy Road
Myrtle Beach, SC 29579