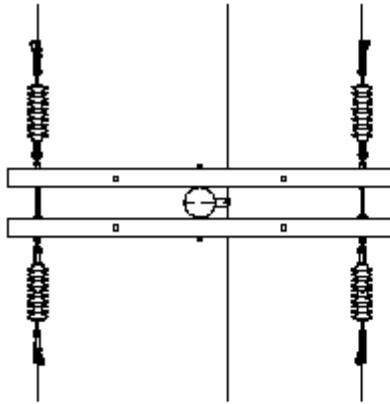


Journeyman Event – **CUTOUT CHANGE-OUT**

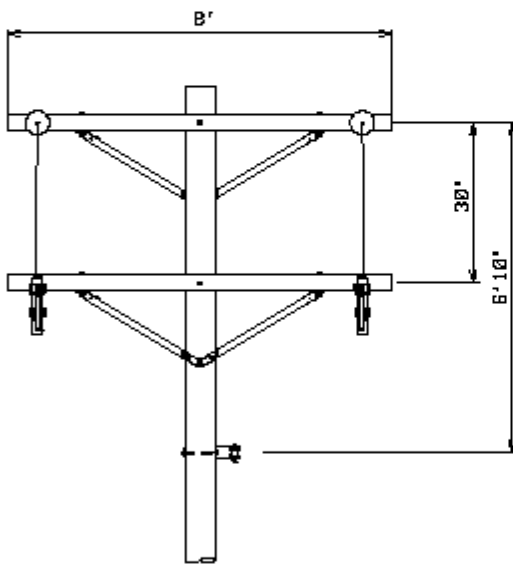
Event Time: 10 Minutes
Drop Dead Time: 15 Minutes

This event is simulated energized at 12kv. Teams will replace two 15Kv, 100 Amp cutout units mounted on opposing ends of an 8ft crossarm. The construction is a two phase double dead end with a switch arm and neutral.

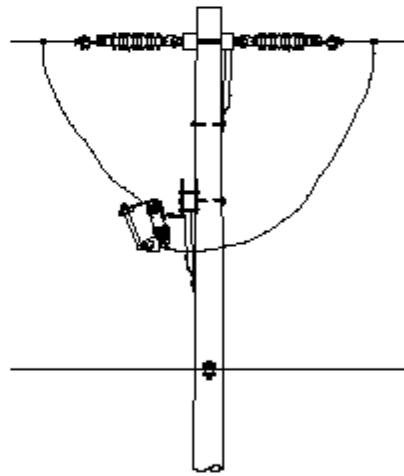
1. Teams will pick up new fuses and jumpers as they enter the arena. (Hot line clamps can be installed to the jumpers during the set-up time) New jumpers will be cut to approximate length and should be verified by team.
2. Teams will have 5 minutes to set-up, and all tools and cover-up must be kept off the ground utilizing a competitor supplied tarp in the designated work area.
3. Fuses and Jumpers will be installed on the new cutouts after the event time begins.
4. Neutral and neutral clevis must be covered with rated cover-up (line guards).
5. All reach and fall rules apply. NESC minimum approach distance must be maintained.
6. Electric continuity must be maintained at all times. Mechanical temporary jumpers must be utilized and must be rated for a minimum of 15kv. The mechanical jumpers must be installed with hot sticks and control will be maintained at all times. No incidental contact will be allowed with unprotected mechanical jumpers. A section of rated line hose can be placed on the mechanical jumpers to prevent incidental contact with the crossarm or linemen.
7. The fuse barrels do not have to be opened in the air when the cutouts are being removed or installed.
8. All permanent connections must be brushed (including primary where hotline clamp will be reconnected, stirrups will not be used).
9. Judging will continue until the event site is restored to the original condition.
10. All general rules apply.



TOP VIEW



FRONT VIEW



SIDE VIEW



SANTEE
COOPER

12KV CUT OUT
CHANGEOUT EVENT

DATE: 06 MAR 08
 DRAWN: JCOX
 SCALE: NTS
 APP: